



BASALT CREEK CONCEPT PLAN

Attachment 9: Boones Ferry Messenger

SMART Transit Seeks Public Input to Guide New Initiatives

New state funding sources are creating an opportunity for Wilsonville's South Metro Area Regional Transit (SMART), to pursue additional and/or enhanced public transportation services.

Throughout June, SMART is seeking input from community stakeholders to help the agency prioritize future initiatives being considered, including:

- Adding new destinations such as Woodburn, Hillsboro, Oregon City and/or downtown Portland
- Eliminating fares on out-of-town destinations
- Converting bus fleet to alternative fuels — electric and CNG
- Developing new SMART programs (vanpool, bikeshare, coordinated medical shuttles)
- Increasing current weekday service hours
- Increasing current weekend service hours
- Increasing frequency of current bus routes (i.e. less wait time between buses)

Visit www.ridesmart.com/surveyTMPupdate and complete a very brief survey by June 30 to help guide SMART's priorities.

Community input will be analyzed and incorporated into the Transit Programs Enhancement Strategy, an amendment to the 2017 Transit Master Plan that guides SMART planning and decision-making, and satisfies an eligibility requirement for funding.

Preliminary survey results and project details are being presented to the Planning Commission at a work session on June 13, 6 pm, at City Hall.

To learn more about SMART's Transit Master Plan, visit: www.ridesmart.com/tmp or contact Nicole Hendrix, Management Analyst, at 503-685-9095, hendrix@ridesmart.com.

SMART is seeking input from community stakeholders to help the agency prioritize future initiatives.

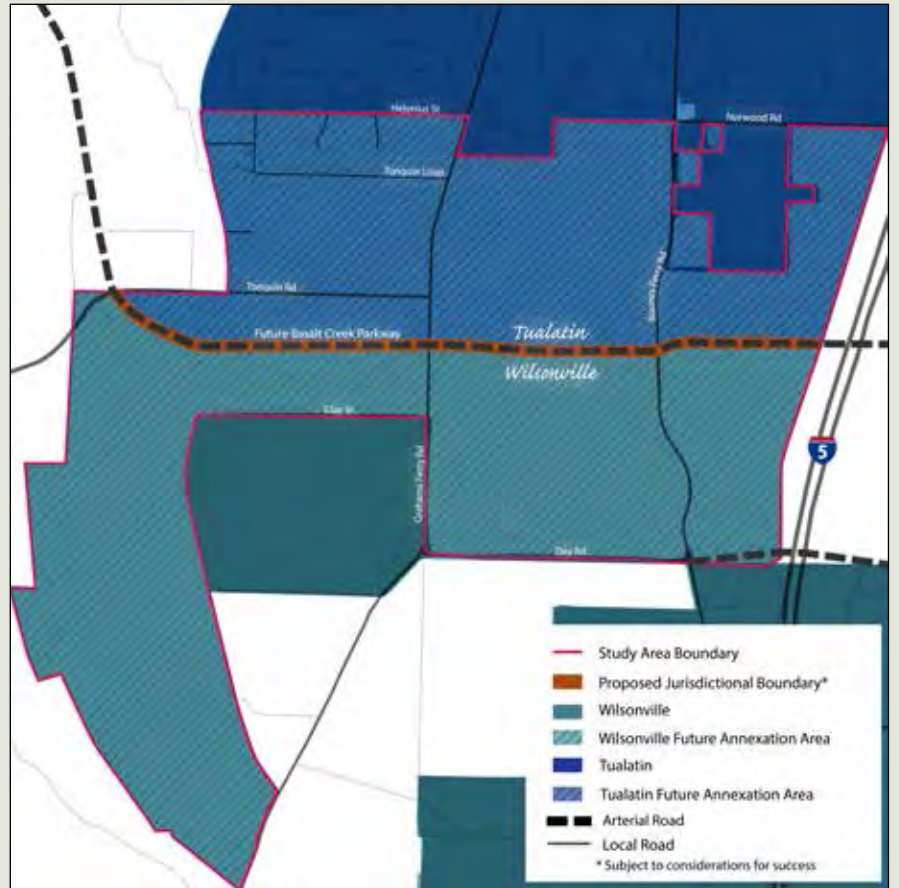
Wilsonville, Tualatin Resume Development of Vision for Basalt Creek Area

Tualatin and Wilsonville are a step closer to developing the Basalt Creek Concept Plan, which provides a vision for about 850 acres — generally located between the two cities — that is currently comprised of homes, rural industry, such as nurseries and farms, and beautiful natural areas.

Portland's regional government authority, Metro, recently approved the land-use designation for Basalt Creek's Central Subarea, determining that the subarea acreage remain designated for employment use. With a resolution in place, a project team from both cities is now developing the final draft concept plan.

The collaborative effort ensures that both cities are involved in creating a vision that appeals to members of both communities, provides adequate services, coordinates land use and transportation, and preserves the area's natural resources.

The planning team is seeking adoption of the concept plan by both city councils this August. In Wilsonville, the Planning Commission is reviewing the Basalt Creek Concept Plan at a work session on June 13, 6 pm, at City Hall. A City Council work session is scheduled for June 18, 5 pm, at City Hall.



Adoption hearings are scheduled for July 11 with the Planning Commission and August 6 with City Council.

To learn more about the project or to sign up for project updates, visit www.BasaltCreek.com.

Visitor Surveys to Begin This Month at Several Summer Event Locations

Wilsonville Parks & Recreation is undertaking visitor surveying as part of the "Explore Wilsonville" tourism-development program.

In-person surveys are being conducted during the Festival of Arts, June 2-3, and occur throughout the summer at other events and locations in and near Wil-

sonville. More surveying is set for winter of 2019.

Survey results inform planning for future programs designed to enhance visitor experiences.

For more information, contact Brian Stevenson, Recreation Program Manager, at 503-570-1523; stevenson@ci.wilsonville.or.us.

TAKE THE SMART SURVEY
www.ridesmart.com/surveyTMPupdate



29799 SW Town Center Loop E. (mail)
28879 SW Boberg Road (office)
503-682-7790
smart@ridesmart.com
www.RideSMART.com

Walk SMART Each Wednesday

Join Walk SMART at noon each Wednesday in June at various locations. Walks begin promptly at 12 pm, rain or shine.

Meet new friends and do some lunchtime networking. Bring your walking shoes to work with you.

Visit www.ridesmart.com/walksmart for a full summer calendar of walking meeting locations.



Date	Meeting Location
June 6	Next Level Chiropractic
June 13	Therapeutic Associates
June 20	American Family Kyle Bunch
June 27	FLIR main doors

June Proud Partners



Free Minor Bike Repair June 2

SMART hosts a transportation information booth at the Wilsonville Festival of Arts and provides free Art Tours by trolley at the top of each hour (noon-4 pm) on Saturday, June 2. Get a free bike check, courtesy of Performance Bicycle of Tualatin (10 am-4 pm); first-come, first-served Pull that bike out of storage, and we'll see you at Town Center Park.



Charbonneau Shopper Shuttle



Effective June 21 a new SMART shuttle service begins in Charbonneau.

Service is provided from Charbonneau Country Club, Spring Ridge and French Prairie at Louvonne to Fred Meyer and Safeway-area shopping centers. Service begins at 9 am and continues until the last drop off at 5 pm. For more details, visit www.ridesmart.com

Expanded Mid-Day Service to Canby Begins June 21

Canby 3X Express Service

In partnership with Canby CAT service, SMART is expanding Canby 3X service with four additional mid-day trips. New service begins June 21.

El servicio entre semana del Canby Transit Center a la estación de Wilsonville ha sido expandido.



Weekday service from Canby Transit Center to Wilsonville Station has been expanded.

Canby 3X-Express Service

Wilsonville Station	Canby Transit Center	Canby Transit Center	Canby Transit Center	Canby Transit Center	Canby Transit Center	Canby Transit Center	Wilsonville Station
5:30a	5:39a	5:47a	5:49a	5:55a	5:56a	6:05a	6:14a
6:30a	6:39a	6:47a	6:49a	6:55a	6:56a	7:05a	7:14a
7:30a	7:39a	7:47a	7:49a	7:55a	7:56a	8:05a	8:14a
8:30a	8:49a	8:47a	8:49a	8:55a	8:56a	9:05a	9:14a
10:00a	10:09a	10:17a	10:19a	10:30a	10:31a	10:40a	10:49a
11:30a	11:39a	11:47a	11:49a	12:00p	12:01p	12:10p	12:19p
1:00p	1:09p	1:17p	1:19p	1:30p	1:31p	1:40p	1:49p
2:30p	2:39p	2:47p	2:49p	3:00p	3:01p	3:10p	3:19p
3:35p	3:44p	3:52p	3:54p	4:00p	4:01p	4:10p	4:19p
4:35p	4:44p	4:52p	4:54p	5:00p	5:01p	5:10p	5:19p
5:35p	5:44p	5:52p	5:54p	6:00p	6:01p	6:10p	6:19p
6:35p	6:44p	6:52p	6:54p	7:00p	7:01p	7:10p	7:19p

Five-Year Forecast Looks at the City's Operating Accounts

In February, the Budget Committee heard a report from the City's Finance Director regarding the five-year financial forecast for the City's nine main operating funds. These funds include: the General Fund, Community Development, Building, Transit, Water Operating, Sewer Operating, Stormwater, Street Lighting and the Road Operating Fund.

In general, the City's operating funds are in a strong position and are maintaining healthy financial reserves. The presentation to the Budget Committee in February however, identified particular challenges and opportunities for the City's General Fund, the Transit Fund and the Community Development Fund. These three funds may have to rely on reserves in the future to keep up with service demands.

The General Fund is comprised of property taxes and pays for services such as the Library, Parks and Police. Over the next five years, the City faces challenges in providing services and implementing technological tools to keep up with the City's growth. The forecast demonstrates that the City's reserves may have to be tapped in order to pay for on-going costs.

The City's South Metro Area Regional Transit (SMART) is actively exploring options to avoid using reserves for operations over the next five years. SMART relies on a payroll tax to fund approximately 70% of the transit agency's operation, the rest is fund-

ed by grants and fare revenue. Because overall payroll growth in the region is projected to be relatively flat in the near future, the payroll tax revenue is not keeping up with the cost to operate the system. Even with the addition of new jobs, an adjustment to the payroll tax may be necessary in order to ensure continued operation at current levels.

The Community Development Fund is responsible for land use, planning, engineering and administering the City's capital infrastructure, and code enforcement. This fund is struggling to avoid a deficit, and the City has engaged consulting services to review the fund's activities, fees and charges, with the goal of placing the fund on a firm financial foundation into the future.

The Street Lighting Fund is responsible for the electricity and maintenance of the City's street lights. Over the next five-years, the City is exploring retro-fitting fixtures with light-emitting diode (LED) bulbs using resources from the fund and in coordination with Portland General Electric.

The Road Operating Fund is funded by the gas tax and is used for street maintenance and repair, maintenance of sidewalks, pavement markings, signs and signals. Over the next five years, gas tax receipts are shown to grow very slowly, as people drive less and purchase more fuel efficient vehicles.

The Five-Year Forecast document is available online at www.ci.wilsonville.or.us/173/Financial-Forecasting.

The Budget Committee is scheduled to hear the City Manager's proposed budget for Fiscal Year 2016-17 on May 18, June 1 and if necessary, on June 8. These meetings are open to the public and public comment is encouraged. Proposed budget documents are expected to be available to the public on May 9 and will be posted online at www.ci.wilsonville.or.us/budget.

Budget Committee Meetings

- Weds, May 18, 6 - 10 pm
 - Weds, June 1, 6 - 10 pm
 - Weds, June 8, 6 - 10 pm
- City Hall, 29799 SW Town Center Loop East

In general, the City's operating funds are in a strong position and are maintaining healthy financial reserves.

Garden Club Holds Annual Plant Sale on Saturday, May 7

The Wilsonville Garden Club is holding an annual plant sale on Saturday, May 7, at the Wilsonville Public Library, 8200 SW Wilsonville Road.

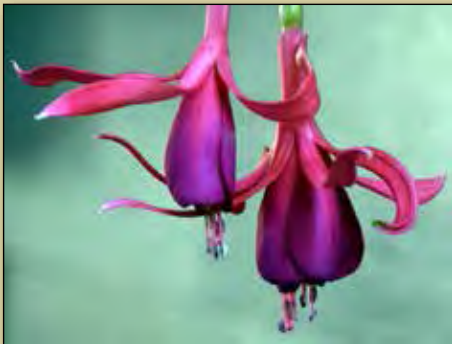
Wilsonville Garden Club Annual Plant Sale
 • Sat, May 7, 9 am
 Wilsonville Public Library
 8200 SW Wilsonville Road

The club's sale offers large selection of the very popular sun and shade hanging baskets, blooming annuals, perennials plus cuttings and divisions from club member's gardens and an assortment of Garden

The sale begins at 9 am and lasts until the all the plants are sold which at past sales is usually before 2 pm.

Gallery yard art.

All of the proceeds from the event go to support local horticulture education and scholarships.



New Car Dealership in North Wilsonville Launches Community Art Exhibition to Support Local Artists

In April, a new car dealership in north Wilsonville, Findlay Chrysler Jeep Dodge Ram of Wilsonville, is debuting the Findlay Community Art Exhibition on Friday, April 1.

"Findlay of Wilsonville embraces the art and culture that Portland and its surrounding suburbs have to offer, and we plan to share it with our customers," stated Laurie Tarter, Findlay Marketing Director.

The Findlay Community Art Exhibition hosts talented local artists by offering exhibition space in the dealership's main lobby to showcase local artists. Each month a new artist is selected to feature their art for approximately three to four weeks. Exhibitions begin with a gallery reception that includes refreshments and a chance to meet the artist.

"We are pleased to bring this dynamic new art event to the community," said Bruce Schneider, Managing Partner. The goal of the exhibition is to celebrate and



In April the Findlay car dealership is featuring art from photographer, Brian Belefanti of Portland shown here.

showcase the many talented artists who live here and to offer community members a place to enjoy great local art with their families. We encourage people of all ages to come enjoy this unique event and support area artists."

For the inaugural exhibition, Findlay of Wilsonville is partnering with the "Wandering Arts" series which is a program coordinated by the Tualatin Chamber Arts Committee to select the first artist to be featured at the monthly exhibition.

April's featured artist is photographer, Brian Belefanti of Portland. Brian photographs landscapes and environmental portraits utilizing a camera filtration system that involves shooting through liquids that are relevant to the subject being photographed. His work has taken him to Cuba, Montreal, the American South, Mexico, Spain, Nova Scotia, Portugal and Turkey. In 2006, he was named Photographer of the Year by the International Color Awards and has received numerous honors at the 2004 International Photography Awards.

The exhibition runs April 1 - April 30 and is open Monday - Saturday, 10 am - 7 pm, and on Sundays, 11 am - 5 pm. The general public is invited to attend the free Meet the Artist Reception on Thursday, April 14, 7 pm, at the new indoor car dealership located at 25600 SW Parkway Center Drive in Wilsonville.

Artists interested in learning more about the featured artists program should contact Laurie Tarter, Findlay Marketing Director, at 503-563-7222; ltarter@findalycar.com.

WHS Hosts Public University and Community College Night

The Wilsonville High School Counseling Department is hosting a Oregon Public University and Community College Night on Wednesday, April 6, 6:30 pm in the WHS Library and Pointe. Eight Oregon public uni-

Oregon Public University and Community College Night
 • Wed, April 6, 6 :30 pm , WHS
 6800 SW Wilsonville Road

versities and several local community colleges are planning to attend the college fair event. The evening begins with an overview and introduction from the universities, followed by an open house where attendees can talk to representatives of any or all of the schools. High school juniors who are just starting their search or planning on attending an Oregon university, as well as seniors looking at community colleges, should plan on attending this event. For more information contact Lyndi Tucker, WHS College & Career Center Coordinator, tuckerl@wlwv.k12.or.us.

Long-Range Planning Projects

Basalt Creek Concept Plan

The Basalt Creek Concept Plan guides future development of the Basalt Creek area, an 800-acre unincorporated, rural area between Wilsonville and Tualatin.

Both the Wilsonville and Tualatin City Councils' are considering resolutions at upcoming meetings to acknowledge the discussion and



agreements from the December 16, 2015, joint Council Meeting. The Wilsonville City Council is scheduled to hear the matter on March 21.

In order to provide the public another opportunity to learn about and provide input on the preferred alternative for the Basalt Creek Con-

Basalt Creek Concept Plan Open House
 • Thurs, April 28, 5:30 pm
 Juanita Pohl Center, 8513 SW Tualatin Road, Tualatin

cept Plan, the public is invited to attend an Open House on Thursday, April 28, 5:30 pm. The open house is being held in Tualatin at the Juanita Pohl Center, 8513 SW Tualatin Road.

For more information visit www.BasaltCreek.com or contact Miranda Bateschell, Long-Range Planning Manager, at 503-570-1581; Bateschell@ci.wilsonville.or.us.

Town Center Master Plan

Last fall, the Metro Council awarded the City of Wilsonville a \$320,000 grant to fund the majority of costs for Wilsonville's Town Center Master Plan proposal. The City is matching the grant with \$100,000 contribution to cover the long-range plan's total anticipated cost of \$420,000.

This project seeks to create a long-range plan and near-term actions for how the City's Town Center area can better serve the interests and needs of residents, workers and visitors. The plan will develop strategies for how the Town Center area can evolve into a more walkable, attractive and commercially vibrant, mixed-use district capable of supporting a range of businesses.

The Planning Department has created a Town Center project web page which will continue to be updated with project information at www.ci.wilsonville.or.us/TownCenter.

For more information Miranda Bateschell, Long-Range Planning Manager, at 503-570-1581; bateschell@ci.wilsonville.or.us.

Reports from City Boards and Commissions

City Council Implements Marijuana Ban, Approves Zone Changes, Annexes Property and Updates Public Works Standards

On Monday, Jan. 4, the Wilsonville City Council made effective an ordinance that continues an existing ban within city limits on the sale and production of both medical- and recreational-marijuana products, including medical marijuana-processing sites, medical marijuana dispensaries, recreational marijuana producers, recreational marijuana processors, recreational marijuana wholesalers, and recreational marijuana retailers. The ban is permitted under state law by House Bill 3400 (2015). The law further requires that the ban be referred to the voters at the next statewide general election in November 2016, if the state-sanctioned ban is to remain in effect thereafter.

The City Council also held two public hearings and approved ordinances that amend the City's Zone Map from a "Public Facility" to "Village" zoning designation for two parcels of land located in the central area of the Villebois neighborhood. The zone change by home-builder applicant Polygon Homes Northwest seeks to permit construction of 132 row houses. The first planned development, Brookside Terrace, includes 50 row houses on approximately 3.2 acres located northwest of SW Villebois Drive North between SW

Costa Circle West and SW Berlin Avenue. The second development, Camden Square and Royal Crescent at Villebois, includes 82 row houses located in the Villebois Village Center between Costa Circle and SW Villebois Drive. Both developments were previously reviewed and approved by the Development Review Board Panel A on December 14.

The City Council also held a public hearing and approved an ordinance that annexes into the City limits specific segments of SW Grahams Ferry Road and SW Tooze Road and also a 22-acre undeveloped property located within the Villebois Master Plan Area on the south side of Tooze Road. The City already has authority for the road and is required to maintain it. The approved annexation is needed in part to allow the investment of urban renewal funds in the Tooze Road improvement project, which is currently being designed to widen and improve the western section of Tooze Road just east of SW Grahams Ferry Road. A portion of the other property to be annexed is to be used, in part, for a public park.

The City Council also held a public hearing and approved an ordinance that amends the City's Public Work Standards to require: the use of warm mix asphalt for road improvements; changes to the storm

water design standards; the use of iron pipes and fittings that are "made in the USA"; sanitary design changes to comply with the City's odor code; and changes to the colors used to paint public and private fire hydrants to make identification easier and faster.

Under Communications, the Council heard a report from the City's Auditor that found the City's financial statements are "free from material misstatement" and conform to Generally Accepted Accounting Principles, applicable state standards and also federal requirements. The Council also heard from 2015 Leadership Academy graduates, Lorie Loen and Kathryn Martinez-Gilbertson, who, along with others, hosted a Spaghetti dinner fundraiser in December raising over \$1,100 in funds that they presented to Wilsonville Community Sharing board members.



Wilsonville Community Sharing board members accept donation check from Leadership Academy participants of funds raised at December's Spaghetti benefit dinner (left to right) Dick Spence, Taft Mitchell, Michelle Ripple, Mayor Tim Knapp, Lori Loen and Kathryn Martinez-Gilbertson.

Under Mayor's Business, the Council recognized the City's Public Works Delora Kerber in being elected as the 2016 President of the Oregon Chapter of the American Public Works Association, also known as APWA, which represents 800 professional engineers, technicians, operations staff, public works directors, business people, contractors and consultants.



Delora Kerber

At the meeting the City Council also decided to continue a resolution regarding the adjustments to the sales price of a 10-acre surplus property that the City is selling to Polygon WLH LLC to the next City Council meeting that is planned to be held on Thursday, Jan. 21, 7 pm.

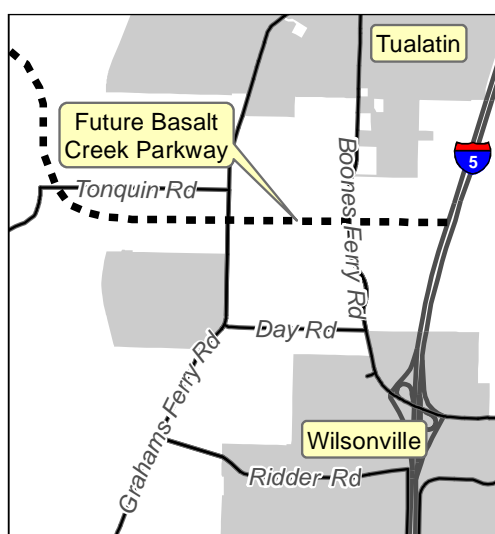
At work session prior to the City Council meeting, the Council heard updates and discussed plans to expand SMART's Compressed Natural Gas station, a proposal to study the City's role in bringing broadband fiber to the community and a proposal to terrace the hill in Murase plaza adjacent to the plaza's water feature.

Wilsonville and Tualatin Identify Preferred Jurisdictional Boundary for Basalt Creek Concept Planning Area

On Dec. 16, the Tualatin and Wilsonville City Councils held a joint meeting to discuss the Basalt Creek Concept Plan and reached an agreement that the "Future Basalt Creek Parkway," a proposed road that is to run south of, and parallel, to Tonquin Road, is the preferred jurisdictional boundary between the two cities. Acceptance of the jurisdictional boundary as the preferred alternative allows project planners to move forward with finalizing the Basalt Creek Concept Plan for further consideration.

At the meeting the Councils discussed and provided staff guidance on "essential agreements" that need to be covered and resolved in the concept plan to make the proposed

boundary and associated land use plan successful. The areas to be further addressed in the plan include: land uses, transportation (capacity, funding and planning), sanitary sewer, stormwater management, transit service and protections for the Basalt Creek Canyon that runs through the area.



Additional public feedback on the draft plan is to be sought early next year prior to presenting the draft plan to the two Councils for further discussion and potential adoption. For more information about future meetings and feedback opportunities visit www.BasaltCreek.com, or contact Miranda Bateschell, Long-Range Planning Manager, at 503-570-1581; bateschell@ci.wilsonville.or.us.

Upcoming on the Council Agenda

The following issues are tentatively scheduled for consideration and or discussion by the City Council during February. Scheduling changes can and do occur; check for updated meeting information at the City's website home-page, www.ci.wilsonville.or.us.

Monday, February 1: SMART/Tri-Met Service boundary Basalt Creek area; Tooze Road project; Energy Trust results; Clackamas Community College bond project Update; substantial amendment to West Side URA; sidewalk repair grant program; minor amendment to the Year 2000 URA boundary.

Thursday, February 18: Universal Health Services – annexation, zoning; cooperative utility agreement with WWSP/ODOT - Kinsman project; Republic Services rate increase request; Year 2000 minor URA amendment.

Planning Commission Update

At the Planning Commission meeting on January 13, the Commission elected Jerry Greenfield as 2016 Chair and Eric Postma as 2016 Vice Chair. The Planning Commission received an update and provided feedback on the Basalt Creek Concept Plan. The Commission also heard a report and provided suggestions for engaging the public and receiving input on the Town Center Master Plan project which is in the initial stages of implementation.

Development Review Board Update

On December 14, the Development Review Board (DRB) Panel A approved a Zone Map Amendment and various plans proposed by home builder Polygon Northwest for a development of 50 row houses, known as Brookside Terrace, located northwest of SW Villebois Drive North between SW Costa Circle West and SW Berlin Avenue. In addition the DRB Panel A also approved a second Zone Map Amendment and various other plans also proposed by home builder Polygon Northwest for a development of 82 row houses, known as Camden Square and Royal Crescent at Villebois, to be located in the Villebois Village Center between Costa Circle and SW Villebois Drive. At the same meeting the DRB also approved the annexation into the City limits of specific segments of SW Grahams Ferry Road and SW Tooze Road and also a 22-acre undeveloped property located within the Villebois Master Plan Area on the south side of Tooze Road. Finally the DRB approved design review for two single-family dwellings in Old Town to be located at 30580 SW Boones Ferry Road.

Donate Food for Library Fines

Reduce or eliminate your library overdue fines by bringing in cans or boxes of food during the month of February. Each can or box is worth a one dollar credit toward overdue fines, subject to the approval of library staff.

The food bank prefers donations of:

- Breakfast cereals
 - Canned fruit
- Please do not donate Ramen noodles.

For more information about Wilsonville Community Sharing, please visit their website:

www.WilsonvilleCommunitySharing.org.

All food is to be donated to Wilsonville Community Sharing for the assistance of needy area families. Please check expiration dates carefully! The food bank cannot accept or use expired food.



Reports from City Boards and Commissions

City Council Reduces First Violation Penalties for Lesser Offenses and Welcomes Sister City Delegation from Kitakata, Japan

On Nov. 2, the Wilsonville City Council held a public hearing and approved an ordinance that amends Chapter 10 of Wilsonville City Code to reduce the penalties for first violations of certain lesser offenses related to dog control, skateboarding and unauthorized camping on public property. Citations on these charges are reduced from criminal misdemeanors to civil infractions, along with lowering the maximum penalties and potential imprisonment that apply to these violations.

The Council continued until the Dec. 7 a public hearing on an ordinance that establishes the factors to be considered when setting franchise fees for use of the public right-of-way.

Under Mayor's Business the City Council approved the City Attorney's employment contract (see related article on page 1) and also the appointment of Dave Becker to the Parks and Recreation Advisory Board to fill the vacant unexpired term of Adam Rahmlow that runs until Dec. 31, 2018.

Under Communications, the City Council welcomed a 20-student delegation accompanied by two chaperones from Wilsonville's Sister City of Kitakata, Japan, who are visiting the U.S. until Nov. 7 (see related photo on page 1). Mayor Tim Knapp presented the delegation a gift to bring back to Mayor Shinya Yamaguchi of Kitakata, Japan. Also during this portion of the meeting, Library Director Pat Duke introduced the Library's new Outreach Librarian, Deborah Gitlitz, who is focused on reaching out to populations who are currently underserved by the Library and also promoting early-childhood literacy programs throughout the community.

Under New Business, the Council approved program guidelines governing the use of City funds for a utility-bill assistance program administered by Wilsonville Community Sharing, a local food-bank and

emergency-assistance provider. The program provides income-eligible community members short-term financial assistance in order to pay utility bills.

After the meeting, the members of the City Council, acting in their role as the Urban Renewal Agency Board, accepted the highest bid of \$5.1 million offered by Polygon WLH LLC for a 10-acre parcel of surplus property on Tooze Road originally acquired for use as a primary-school site in Villebois. All proceeds from the sale of the surplus property are to be returned to the Urban Renewal Agency.

At work session prior to the City Council meeting, the Council heard updates and discussed the Wilsonville-Metro Community Enhancement Program, laws and alternatives for regulating marijuana-related businesses in Wilsonville, Board and Commission terms of office and a proposed grant applications to ODOT for bike/ped trail and bridge improvements.



Mayor Tim Knapp presents Mr. Jiro Sato, a chaperone leading the Kitakata student delegation, a gift to give to Mayor Shinya Yamaguchi of Kitakata, Japan when he returns to Japan.

City Council Holds Well-Attended Public Hearing on Frog Pond Plan

On Oct. 19, the Wilsonville City Council held a well-attended public hearing on Resolution No. 2553 regarding the Frog Pond Area Plan that is designed to establish a vision for the mostly undeveloped 500-acre area surrounding the Frog Pond Grange on Stafford Road. Thirty-two individuals and organizational representatives testified on a wide range of issues, including residential density, traffic impact and quality of life. Due to excused absences of two councilors, the Council deferred action on the plan. A Council vote on the plan is expected no sooner than Monday, Nov. 16, at a meeting when a full City Council is expected to be available to take action on the plan and after all City Councilors have had the opportunity to watch and consider testimony from the public hearing. A video replay of the public hearing and the entire City Council meeting is available on line at www.ci.wilsonville.or.us/Oct19Meeting. For more information about the Frog Pond Plan, including all related documents and information, visit www.ci.wilsonville.or.us/FrogPond.

The Council also held a public hearing and authorized a supplemental budget adjustment for fiscal year 2015 - 2016 to account for new labor contracts with two employee unions and unfinished projects from the

prior fiscal year.

Under New Business the Council approved the City Manager to enter into an agreement with Wilsonville Community Sharing, a local food-bank and emergency-assistance provider, to fund up to \$15,000 to help the non-profit organization complete a fundraising and strategic-visioning plan.

The Council voted to recommend to the Wilsonville Urban Renewal Agency to accept the highest bid offered by Polygon WLH LLC for a 10-acre parcel of surplus property on Tooze Road originally acquired for a primary-school site in Villebois.

Under the Consent Agenda the City Council authorized the City Manager to enter into a Professional Services Agreement with Ch2M-Hill Engineers, Inc. to design and obtain permits to construct and replace a Willamette River outfall pipe for the Wilsonville Wastewater Treatment Plant.

At work session prior to the City Council meeting, the Council heard updates and discussed draft guidelines for Wilsonville Community Sharing's Renter's Utility Bill Paying Assistance Program, Road Maintenance Task Force and the Transit Technology Upgrade project.

and Tualatin City Councils to continue the discussion of jurisdictional boundary and land use options for the planning area. The joint Wilsonville and Tualatin City Council Meeting is to be held on Dec. 16, 6 - 8 pm, Wilsonville City Hall, 29799 SW Town Center Loop East.

Input to date has been instrumental in guiding discussions and key questions during the planning process. A public open house is still being planned; however, a date has not yet been determined for this event. Please check the project website for the latest information, www.BasaltCreek.com. For more information or to submit comments contact Miranda Bateschell, Long-Range Planning Manager, 503-570-1581; bateschell@ci.wilsonville.or.us.

Upcoming on the Council Agenda

The following issues are tentatively scheduled for consideration and or discussion by the City Council during December. Scheduling changes can and do occur; check for updated meeting information at the City's website home-page, www.ci.wilsonville.or.us.

Monday, Dec. 7: Board and commission appointments; Energy Trust results; accept Canvass of Votes of Nov. 3 election; Marijuana ordinance 2nd reading; sidewalk repair grant program; substantial amendment to West Side URA; Coffee Creek UR District.

Wednesday, Dec. 16: Joint Council Meeting with the City of Tualatin regarding the Basalt Creek Plan.

Monday, Dec. 21: No City Council Meeting.

November Planning Commission

At the Planning Commission meeting on Nov. 12, the Commission discussed the West Side Urban Renewal Plan Substantial Amendment, but no action was taken due to the lack of a quorum. The Commission also heard a report and asked questions regarding a Transportation Performance Modeling report.

Development Review Board Update

The Oct. 26 meeting of the Development Review Board Panel B and the Nov. 9 meeting of the DRB Panel A were both cancelled.

Library Board Report for October

During the Library Board meeting in October various reports included:

- Teens held a Murder Mystery Night in October.
- The Play Group has started again, meeting Monday mornings at 9:30 am.
- New Outreach Librarian Deborah Gitlitz started in October.
- Longtime Library Clerk John Smith is retiring as of the end of November (see article on page 7).
- Spanish classes have been so popular that the classes will continue into the winter with another Beginning 1 class and a new Beginning 2 class.
- The "How to Write a Novel in 30 Days" talk given by Andrea Erickson in preparation for National Novel Writing month saw 26 people in attendance.
- The Library hosted a Red Cross blood drive event.
- All of the rain gutters around the building have been replaced.
- Friends of the Library reported due to various complications, the Book Notes Concert Series is canceled for the year, barring concerts in December and April.
- The Library Foundation reported that the Foundation's annual fundraising event in October raised approximately \$25,000.

The next regular meeting is scheduled for Wednesday, December 2 at 6:30 pm at the Library.

City Thanks Volunteers Who Serve

The Wilsonville City Council appreciates residents and business managers who volunteer their time and expertise to serve on City boards and commissions, and wishes to recognize the following individuals whose terms of service end in 2015.

- **Cheryl Dorman**, DRB Panel B member since December 2011
- **Lenka Keith**, DRB Panel A member since December 2011
- **Marta McGuire**, Planning Commission member since March 2008
- **Wendy Veliz**, Budget Committee member since September 2011



Community members are encouraged to remove leaves and other debris from storm drains to prevent localized flooding.

Joint Council Meeting to Discuss Basalt Creek Plan on Dec. 16

The Basalt Creek Concept Plan guides future development of the Basalt Creek area, an 800-acre unincorporated, rural area between Wilsonville and Tualatin. At a Wilsonville-Tualatin Joint City Council meeting in June, the Councils reviewed two options for a jurisdictional boundary and land uses in the Basalt Creek planning area. Since that meeting, the Cities of Tualatin and Wilsonville have considered alternative options with the goal of identifying a preferred alternative that satisfies the aspirations of both Cities, provides the best solution for the community, and meets regional government requirements for concept planning.

A meeting has been scheduled for the Wilsonville

Joint Council Meeting on Basalt Creek Plan
 • **Wed, Dec 16, 6 pm**
 City Hall, 29799 SW Town Center Loop East

Learn About the Kinsman Road Extension Project at Open House on June 10

Design of the Kinsman Road extension project is nearing completion. However, before the design is finalized, the Wilsonville community is invited to view the proposed roadway improvements and offer ideas on the final design details at an open house on Wednesday, June 10, 6 – 7:30 pm at Wilsonville City Hall, 29799 SW Town Center Loop East.

The Kinsman Road extension project provides an additional north-south roadway connection, linking Boeckman Road with Barber Street on the west side of

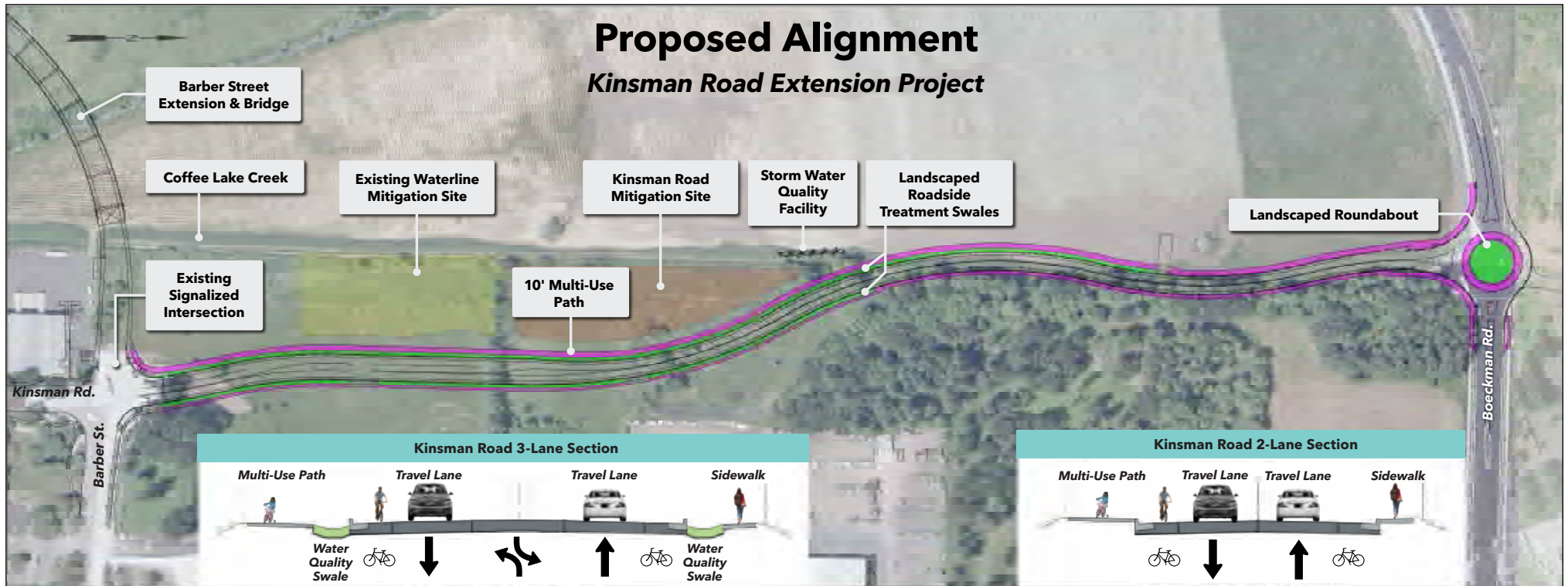
town. A challenging roadway design project, the Kinsman Road extension threads the needle between the Coffee Lake Creek wetlands, Bonneville Power utility lines, forested habitat and existing industrial development. The project incorporates some of the same design features utilized on Boeckman Road, such as wildlife crossing and storm water culverts, to preserve the wetland functions on both sides of the new roadway.

Along with the Barber Street Bridge currently under construction, the Kinsman Road extension project links Wilsonville's western residential neighborhoods with the City's industrial employment areas. The project is designed to alleviate traffic congestion on Boones Ferry and Boberg roads, while providing faster Boeck-

man Road access to the WES Commuter Rail Station. The extension of Kinsman Road is a key component of Wilsonville's vision for an interconnected system of transportation choices.

The Kinsman Road extension includes bike lanes, sidewalks, 10-foot wide multi-use pathway along the Coffee Lake Creek wetlands, stormwater improvements, a roundabout intersection at Boeckman Road and approximately 2.6 acres of habitat enhancement. Construction of the roadway extension is anticipated to begin in the spring of 2016.

For more information or to request meeting accommodations, contact Zachary Weigel, PE, Civil Engineer at 503 570-1565, weigel@ci.wilsonville.or.us.



Public Feedback on Draft Frog Pond Plan Considered by Planning Commission and City Council in June

The Frog Pond Area Plan, led by the City of Wilsonville, establishes the vision for the 500-acre Frog Pond area and defines expectations for the type of community the area is to be in the future.

After receiving direction from the Planning Commission and City Council, the project team drafted a preferred concept plan, which was presented to the public at an open house and through an on-line open house in April.

The project team has compiled the community's



feedback received through the open houses and published the input on the project website. This information along with final recommendations to key policy questions are to be presented to the Planning Commission and City Council for discussion in preparation for potential adoption of the Frog Pond Area Plan later this summer. Key meeting include:

- **Wilsonville Planning Commission (Work Session):** June 10, 6 pm, Wilsonville City Hall
- **Wilsonville City Council (Work Session):** June 15, 5 pm, Wilsonville City Hall

Materials are available online at the project website approximately one week prior to the meetings, www.ci.wilsonville.or.us/FrogPond. Written comments may be submitted to Chris Neamtzu, Planning Director, via email at Neamtzu@ci.wilsonville.or.us or in hard copy.

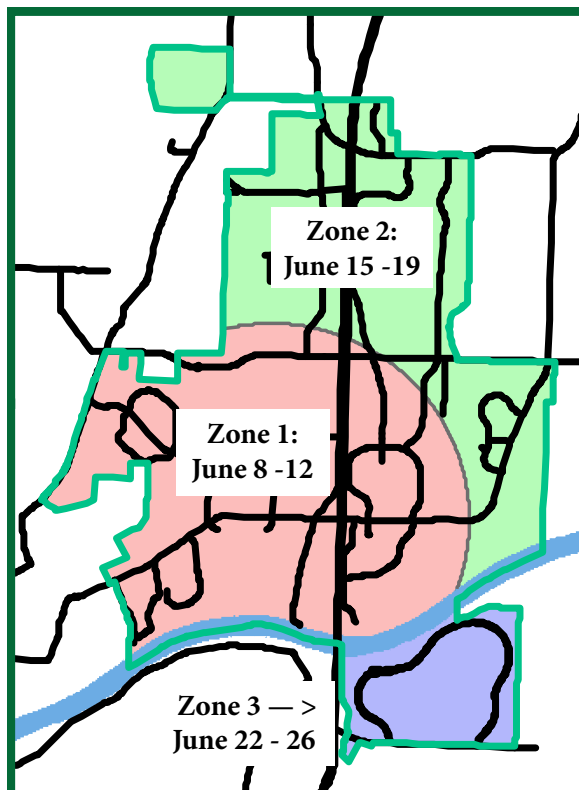
Water Mains Get "Spring Cleaning" with Hydrant Flushing in June

Every year Wilsonville's utilities crew flush the city's water mains to remove naturally occurring mineral deposits from the pipes. Annual flushing ensures optimal water quality for Wilsonville's residents and helps to maintain the infrastructure by exercising hydrants, valves and blow-off assemblies during the flushing process.

When the utilities crew is flushing in your area, you may also observe that the water in your home or the water coming out of a nearby hydrant appears to have an orange or rust-colored tint. This is a normal occurrence and the water is completely safe. The discoloration is caused by iron deposits in the pipes which get scoured out during flushing. If you observe discolored water in your home, simply run your COLD water for several minutes to clear your lines and flush your toilets once or twice. The water should run clear again within a few minutes.

If you observe a utility crew flushing in your area, make sure to give them plenty of room to work safely while sharing the roadway. Also, be aware that some flushing activities will take place at night to minimize traffic congestion. If you have any questions or concerns regarding the City's annual water main flushing program, please call the Public Works Department at 503-570-4092.

Here is the city's 2015 schedule for water main flushing: Zone 1 (pink) - June 8 -12; Zone 2 (green)- June 15 -19; and Zone 3 (purple) - June 22 - 26.



Tualatin and Wilsonville City Councils to Discuss Basalt Creek Plan and Jurisdictional Boundary

The Basalt Creek Concept Plan guides future development of the Basalt Creek area, an 800-acre unincorporated rural area between Wilsonville and Tualatin. Work continues on alternative options for future land use and infrastructure development. Over the past month, the Wilsonville and Tualatin City Councils reviewed options for sanitary sewer service to the area.

The next step is to identify a jurisdictional boundary and refine potential land uses in the study area. The Wilsonville City Council will be discussing boundary options and land use alternatives at two meetings in June:

- **Wilsonville City Council (Work Session)** – June 1, 5 pm, Wilsonville City Hall (meeting materials posted May 25)
- **Joint City Council Meeting** – June 17, 6 pm, Tualatin Police Training Room, 8650 SW Tualatin Road, Tualatin, OR (meeting materials posted June 10)

Planning is underway for a Public Open House in late summer following the Joint City Council Meeting, where citizens will be asked to give input on a preferred land use alternative for the planning area. Please check the project website for the latest information, www.BasaltCreek.com.

For more information and to submit written comments contact Miranda Bateschell, Long-Range Planning Manager, at 503-570-1581; bateschell@ci.wilsonville.or.us.



Reports from City Boards and Commissions

City Council Upholds Development Review Board Decision

On April 6, the Wilsonville City Council held a public hearing and voted to affirm a decision of the Development Review Board (DRB) regarding a land partition application for a property located at 28205 Canyon Creek Road South. The City Council action upholds the DRB's conditional approval of the partition and reaffirms that the applicant is required to install sidewalks, curbs and gutters along the full property frontage within the Canyon Creek Road South right-of-way.

Under Communications, the City Council heard a report from Fire Chief Mike Duyck of Tualatin Valley Fire and Rescue (TVF&R) about the state of the fire district, which provides emergency services on contract to the City of Wilsonville (see page 3).

During the meeting, Mayor Tim Knapp issued four proclamations. The first proclamation requested by the Parkinson's Action Network declares April as Parkinson's Awareness Month. The second proclamation honors Americorps participants and recognizes the importance of their National Service. The third proclamation honors Arbor Day and the City of Wilsonville's

17-year-long designation by the National Arbor Day Foundation as a Tree City USA. The fourth proclamation requested by the Children's Center, a nonprofit child-abuse prevention organization serving Clackamas County, declares April 2015 as "Child Abuse Prevention Month."

During work session prior to the City Council meeting, the Council heard reports regarding updates on Community Development projects and planning fees.



Mayor Tim Knapp and City Planner Dan Pauly holding the Arbor Day Proclamation.

City Council Approves Bus Purchases and Property Tax Exemptions

At the March 16 meeting of the Wilsonville City Council, the Council adopted a resolution authorizing South Metro Area Regional Transit (SMART), the City's public transportation agency, to purchase two 35-foot, 35-passenger, low-floor, heavy-duty, clean-diesel buses. The purchase price of \$758,306 to acquire the two buses is to be financed primarily by a grant from the Federal Transportation Agency covering 84% of the cost (\$636,977), with the balance paid for by local matching-funds from SMART's purchase reserve fund. The new buses, which take approximately 18 months to be manufactured and delivered, replace two 1990 buses that now have nearly one million miles each of service use. To ensure the City is getting the best price for the vehicles without incurring additional procurement costs, SMART is "piggybacking" on Lane Transit District's prior request for proposals for buses and purchasing the buses from Gillig, the lowest responsible bidder.

Under the Consent Agenda, the City Council

adopted five resolutions that renew property-tax exemptions under state law totaling \$44,730 for five, nonprofit multifamily properties with 366 rental units serving low-income and senior residents in Wilsonville. Together with other affordable housing subsidies, rents for low-income families, seniors, and individuals are lowered by approximately \$308,000 over a twelve-month period.

Under New Business, the Council set a hearing date of April 6 to consider an on the record Appeal of the Development Review Board Panel B's conditional approval of a two-parcel land partition for property located at 28205 SW Canyon Creek Road.

During worksession prior to the meeting, the Council received an update from the Willamette Water Supply Project regarding a new preferred pipeline route extending from Wilsonville to Hillsboro and is to be operational by 2026. The Council also discussed the City's branding strategy.

Library Board Report for March

During the Library Board meeting in March reports included:

- Fifteen teens attended the March teen event and April teen event featured superheroes and comic books.
- The Teen Advisory Board (TAB) has six members, but seeks more to join.
- Library's in Clackamas County are considering use of RFID (radio-frequency identification) which would make check-out, check-in, inventory control, and security easier and less staff intensive. A consultant is to be hired to study feasibility.
- The library is pursuing a grant with Fred Meyer for

\$3500 to sponsor shows for the Summer Reading.

- Libraries throughout Clackamas County are receiving training in the "Reading for Healthy Families Oregon" curriculum, with a goal of training people to promote early-literacy for pre-k children. In support the library is holding early literacy Storytimes events.
 - The library has a new exclusion policy for patrons who display unruly behavior.
 - There was a 0% change in check-outs of downloadable materials over the same time last year, but over the past two years there was a 76% increase.
- The next regular meeting is scheduled for May 27 at 6:30 pm at the Library.



Supporters gathered to celebrate Library's 33rd Birthday (left to right): Jan Reeve; Carla Styczynski; Hilly Alexander; Joe Brouillette; Library Director Pat Duke; Joan Mathews; Kay Jewett; Caroline Berry; Dick Spence; and Swapna Gajjala.

Upcoming on the Council Agenda

The following issues are tentatively scheduled for consideration by the City Council during May. Scheduling changes can and do occur; check for updated meeting information at the City's website homepage, www.ci.wilsonville.or.us.

Monday, May 4: Drinking Water Week proclamation; Montague Park zone change; resolution to increase planning fees; supplemental budget adjustment; resolution to authorize borrowing; form based code (worksession); erosion control (worksession); Morningside intersection realignment (worksession); Canyon Creek pedestrian crossing (worksession).

Monday, May 18: Public Works Week proclamation; form based code (worksession); transportation system performance modeling (worksession); Memorial Park master plan update (worksession); Metro Solid Waste Community Enhancement Grant (worksession); Tourism Promotion Committee formation (worksession).

Planning Commission Update

At the Planning Commission Meeting on April 8, the Commission heard reports, discussed and provided feedback on the Willamette River Water Supply Pipeline Project and the Memorial Park Master Plan update.

Development Review Board Update

On March 23, the Development Review Board Panel B approved a five-year temporary use permit to allow a model home and sales office located at 8730 and 8742 SW Vale Court for applicant Lennar Northwest, Inc.

At the April 13 meeting of the DRB Panel A, the Board recommended the City Council approve a zone map amendment for 3.58 acres near the center of Villebois to enable the development of a private park and adjacent streets. At the same meeting the DRB continued to May 11 the public hearing for applications to develop the park, known as Montague Park. The purpose for the continued hearing is for further testimony and discussion about whether to remove a pickleball/basketball court planned in the park due to neighbors' noise concerns. The park's proposed amenities include a decorative water feature and entry plaza, play structures/area, benches, picnic tables, shelter, circuit training area, an amphitheater, and an artificial-turf putting green. Proposed completion of adjacent streets will make key connections in the Villebois street network.

Basalt Creek Concept Plan Update

The Basalt Creek Concept Plan guides future development of the Basalt Creek area, an 800-acre unincorporated, rural area between Wilsonville and Tualatin. Work continues on alternative options for future land use and infrastructure development in the Basalt Creek planning area. The project team recently completed geotechnical work to better understand the depth and hardness of bedrock in the Basalt Creek planning area, and an analysis of sanitary sewer alternatives for serving the area. The next step is to identify service boundaries and refine potential land uses.

Input to date from stakeholders and members of the public has been instrumental in guiding discussions and key questions during the planning process. There will be more upcoming opportunities for the public to learn about and comment on the concept plan and a preferred alternative for future development. These include:

- Wilsonville City Council (Work Session): June 1, 5 pm, Wilsonville City Hall
- Joint Tualatin-Wilsonville City Council meeting: June 17, 6 pm, Tualatin Police Training Facility
- Public Open House: late summer, date TBD

Please check the project website for the latest information, www.BasaltCreek.com. For more information, contact Miranda Bateschell, Long-Range Planning Manager, at 503-570-1581; bateschell@ci.wilsonville.or.us.



Reports from City Boards and Commissions

Council Moves to Update Wastewater Collection System Master Plan and Amend Use of Public Right-of-Way Rules

At the Feb. 2 Wilsonville City Council, the Council approved an update to the Wastewater Collection System Master Plan that was last modified in 2001. The purpose of updating the plan is to provide a 20-year guide for maintaining and operating the City's wastewater-collection system. The Plan identifies needed sewer lines and pump station upgrades and replacements to ensure that the system provides adequate service for current and future residents and businesses. The updated plan includes cost estimates to be used for general budgeting purposes and for likely inclusion in the Capital Improvement Program, which lists short- and long-term major capital investments that the City plans to complete.

The Council also held a first reading and adopted an ordinance to amend City code to allow the City



Council received a report from the Office of Congressman Kurt Schrader by Whitlee Preim-Siddon, District Aide.

to adjust the terms of franchise agreements in order to take into account the impact of various proposed uses of the public right-of-way.

Under Communications, the Council heard a report from the Office of Congressman Kurt Schrader providing an update on federal affairs.

During the worksession prior to the meeting, the Council heard a report on the City's

Asset Management Program which is a system that tracks the location, condition, required maintenance and replacement schedule for all City-owned assets. Municipal assets that already are or will be covered by the plan include roadways (signs, trees, irrigation and pavement), street lights (poles and lights), facilities (buildings, shelters and pumphouses), parks (sports fields, equipment, courts, lights and irrigation), water (pipes, hydrants, valves, meters and manholes), wastewater (valves, pipes and manholes), stormwater (catch basins, pipes, culverts manholes and ponds) and the City-owned water and wastewater treatment plants.



Local Boy Scouts (left to right) Logan Schoenacker, Joshua Wilcott and Briggs Moore attended the Feb. 2 City Council meeting to earn their governance merit badge.

Council Transfers Property to Urban Renewal Agency, Funds Study of Water Treatment Plant Expansion and Reviews Draft Plan for Frog Pond Area

On Jan. 22, the City Council approved a resolution authorizing the City Manager to transfer ownership of a 9.8-acre parcel of City-owned property located at 11650 SW Tooze Road to the City's Urban Renewal Agency. This property was purchased with Urban Renewal Agency funds in 2006, but ownership was vested with the City in order to facilitate a land exchange with the West Linn-Wilsonville School District. Subsequently, the recession made development of an elementary school at this site financially unfeasible and a new site was selected for the eventual Lowrie Primary School. The resolution approves transferring ownership of this land back to the Urban Renewal Agency so that the proceeds from any future sale of the land are returned to the Urban Renewal Agency.

City Council also approved a resolution authorizing the City to spend up to \$120,000 of the nearly \$1 million needed to study and plan for the future expansion of the Willamette River Water Treatment plant to potentially serve as a regional water treatment plant for both the City of Wilsonville and the customers of the Tualatin Valley Water District (TVWD), including the City of Hillsboro and others. An expanded plant will also help meet Wilsonville's future water demand needs and provide alternate source of water in the event of a disruption in water service from the current plant.

Under Mayor's Business, the Council voted to reappoint Mary Fierros Bower to the Development Review Board Panel A and also appointed Andrew Karr to the Budget Committee to fill a vacancy on the committee created by the recent resignation of Glenn Ohl.

The Council continued an ordinance that adopts the 2014 Update to the Wastewater Collection System Master Plan.

On the Consent Agenda the Council approved the City's 2015-16 state legislative agenda to guide City responses to specific legislative proposals that may arise during the upcoming 2015-16 session of the Oregon Legislative Assembly.

During the worksession well-attended by residents and property owners prior to the meeting, City Council and Planning Commission members held a special joint meeting to hear an update from staff and consultants on the draft Frog Pond area concept plan. Funded by a Metro grant, the City is planning for future residential development, parks and schools in the 500-acre study area. Major items of discussion included the type and density of residential development and the potential inclusion and location of a small-scale, neighborhood shopping area. Members of the two bodies provided staff feedback and direction on the draft plan which will be the topic of another round of community engagement this spring.

Basalt Creek Concept Plan Process Focuses on Providing Services to the Area

During the past several months the cities of Tualatin and Wilsonville continue to make progress on developing the Basalt Creek Concept Plan. Once complete, the plan guides the future development of the Basalt Creek region, an 800-acre unincorporated, rural area between Wilsonville and Tualatin.

In December at a joint meeting of the Wilsonville and Tualatin City Councils, the city councilor members discussed an initial land-use, transportation and infrastructure scenario for the area. Since then, project work is focusing on determining the best way to provide sanitary-sewer service to the planning area. The project team is also gathering information about potential revenues, fees and development standards in order to



begin running and testing models of various land-use scenarios.

Meetings originally planned for this spring are being delayed in order to provide the project team more time to study how to best provide sanitary sewer service to the area. The tentative schedule for additional meetings to review and discuss the plan includes:

- A Joint City Council meeting scheduled for June 17, rescheduled from February, to be held in City of Tualatin.
- A Public Open House will occur over the summer, originally planned for March.

For the latest information on meetings and developments visit the project website at www.BasaltCreek.com.

For more information or to provide comments about the plan, contact Miranda Bateschell, Long-Range Planning Manager, at 503-570-1581; Bateschell@ci.wilsonville.or.us.

Upcoming on the Council Agenda

The following issues are tentatively scheduled for consideration by the City Council during March. Scheduling changes can and do occur; check for updated meeting information at the City's website homepage, www.ci.wilsonville.or.us.

Monday, March 2: Councilor Dirksen, Metro Update (during worksession); 2006 Metro Spaces Bond Measure; Branding/City Logo; Business License Changes.

Monday, March 16: Mutual use agreement Landover HOA water services; Business License and Transit Tax payment overdue policy/process; and Willamette Water Supply Update: Pipeline Routing (during worksession).

Development Review Board Update

On Jan. 26, the DRB Panel B approved a five year Temporary Use Permit for a sales office and model homes in the Calais at Villebois subdivision along with associated parking, landscaping and other improvements. Also during the meeting Aaron Woods was elected as the 2015 Chair and Dianne Knight was elected as Vice-Chair.

On Feb. 9, the DRB Panel A approved an application for a conditional use permit for a home business of light-office duty for 10050 SW Wilsonville Road.



The home previously occupied by the Northwest Montessori School is approved for light-duty office use.

The board also approved the Final Development Plan (Architecture and Landscaping) for the Seville Row Homes (7 units) and for the Carvalho Row Homes (18 units). The Seville Row Homes are located on the northeast side of Barber Street between Villebois Drive and Ravenna Loop. The Carvalho Row Homes are located on both sides of Villebois Drive between Zurich Street and Barber Street.

January Library Board Report

During the Library Board Meeting in January Library Director Patrick Duke and others gave reports on a variety of matters.

Youth services: 30 teens attended "Game Night" on Jan. 23. The March Teen event is on Friday, March 13, as a tie-in to the movie release of *Insurgent*.

Librarian's Report: Patrick Duke reported that a fire occurred in the outside book drop on Jan. 16. Library Operations Manager Kim Robben arrived before 7 am to smoke in the staff work area. She called 911 and Tualatin Valley Fire and Rescue and City Public Works staff. TVF&R extinguished the fire and monitored the library's carbon monoxide levels. According to the Fire Inspector, there was no evidence of cigarettes or any accelerants in the fire. Ten items were destroyed in the fire, with an approximate value of \$100. The library was closed for only part of the day of the fire and minor repairs have been made. The fire is being treated as arson by the Wilsonville Police Department.

History Pub: January's topic, the Willamette Locks, was very popular attracting an audience of 150 people.

Strategic Planning: Patrick Duke is planning to meet the chairs of the Library Board, Friends and Foundation to create an agenda for a joint meeting of the groups.

Budget Planning: Patrick Duke reported that he is working on the budget which is essentially a status quo budget, with a 1% increase in the Materials and Services budget and reclassifications of some staff members to better match their duties.

Anniversary of Library (Feb. 14, 1982): Pat Duke announced that the library turned 33 on Feb. 14.

The library is part of the Clackamas County early-learning hub to address school readiness for at-risk youth. Every library in LINCC sent a staff member to a "Reading for Healthy Families" training, which trains caregivers how to talk with and teach parents to read to their children. Librarians Shannon Belford and Steven Engelfried trained.

The next Library Board Meeting is held on Wednesday, March 25, at 6:30 pm at the Library.

Public Workshop in June for Basalt Creek Urban-Area Planning

The cities of Wilsonville and Tualatin are collaborating on a project to plan for the future development of the Basalt Creek region, the rural, unincorporated area between the two cities. The cities, together with Metro and Washington County, have agreed to create a plan that provides an orderly guide for urbanization. One of the outcomes of the Basalt Creek Concept Plan project is to establish the future boundary between the two cities. The Basalt Creek area is

The Basalt Creek area is important for the long-term growth of Wilsonville's industrial base and future family-wage jobs.

important for the long-term growth of Wilsonville's industrial base and future family-wage jobs. One June 17, the cities plan to host an interactive public workshop to gather information and start brainstorming about how the area could develop over time. The workshop utilizes a custom map-based exercise to gather information on community ideas for future land uses, multimodal transportation network (walking, bicycling, transit), and parks and open spaces.

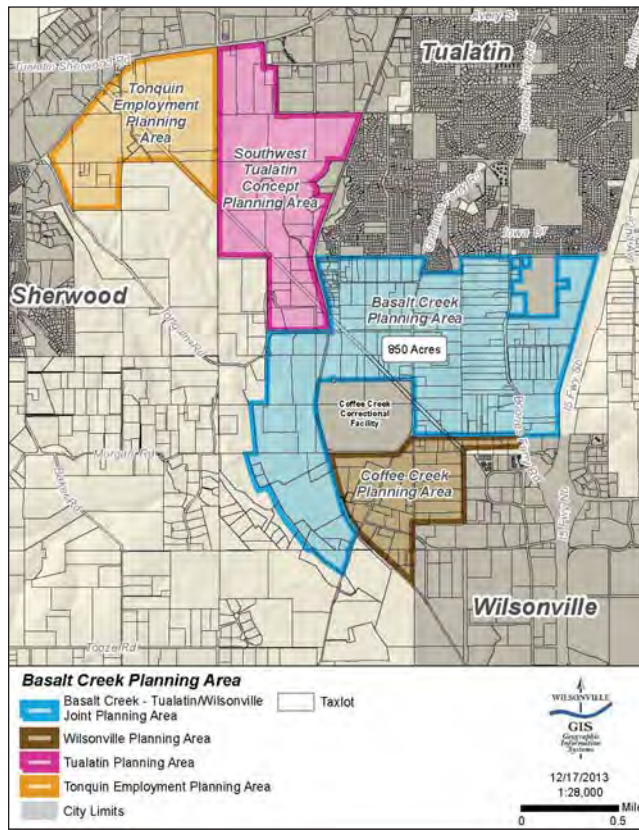
The meeting starts with a brief presentation, and then transitions into a set of questions designed to gather feedback from the attendees about their priorities for the project.

Following the group presentation and instant polling exercise, participants will divide into small groups for a collaborative mapping exercise. Participants will work together, with project staff, in small groups using maps and icons representing future development and other public investments. The project team will then digitize and analyze maps and comments from the public workshop to uncover themes and unique

solutions to create alternative development options.

The workshop is to be held on June 17, 6-9 pm at Horizon Community Church, 23370 SW Boones Ferry Road. Find more information about the workshop and the project at www.BasaltCreek.com.

For more information, contact Katie Mangle, Long-Range Planning Manager, at 503-570-1581; mangle@ci.wilsonville.or.us.



Map showing major concept planning areas for future urbanization located in the Sherwood-Tualatin-Wilsonville 'triangle,' curving in the lower left portion.

City Automates Utility Billing and Water Shut-Off Notification Process

Starting in June, the City is changing how utility customers who miss their payments are notified that they are at risk of having their water shut off. Instead of relying on door-hangers, the City will begin calling past-due utility customers to notify them of a pending water service shut-off. During June and July the City will still use door-hangers, but will discontinue the practice in August.

Past-due customers will receive two automated warning calls on the Thursday and Monday prior to their water being turned off on Tuesday. During the call, customers will be advised of their options to pay the amount due. These options include paying by phone at 503-682-1011, at www.ci.Wilsonville.or.us/UtilityPayment or in person at City Hall. City Hall is open Monday through Friday, 8 am to 5 pm excluding holidays. After business hours, customers can also use the drop box at City Hall which is located on the west side of the building in the round-about area.

The new phone-based system is more efficient and cost-effective than the current process that involves City staff posting door hangers each month on homes throughout town. Additionally, some customers who may have been away and may check voice mail had no way of knowing that a notice had been left on their



Utility Billing Specialist Cricket Taylor at the drop box on the west side of City Hall.

door. In addition to the phone calls, the City will still mail delinquent notices to past-due customers between the 10th and 15th of the month following the due date. Customers who have not provided the City with a current phone number will not be called; the notices mailed to their home or business will be the only warning

prior to shut-off. The vast majority of Wilsonville's 5,160 utility customers pay their bills on time or before the end of the 10-day grace period. Many of Wilsonville's utility customers use the City's auto pay option and are much less likely to miss a bill payment or have to pay late charges or disconnect fees. To learn more about the auto pay option visit www.ci.Wilsonville.or.us/UtilityPayment or call 503-682-1011.

Dog-Leash Laws Expanded to all Public Property

On June 4 a new law goes into effect in Wilsonville requiring dogs to be on leashes while on all public property, which includes publicly-owned streets, parks, sidewalks and open spaces. Concern over conflicts involving dogs running off-leash on public property led to the new policy.

The law does not apply to private land and roads, nor does it apply to service animals or the off-leash dog area in Memorial Park that is located east of the baseball fields.

The new law, which expands upon an existing dog-leash law already in effect for City parks, was approved at the May 5 City Council meeting. During the public hearing prior to adoption, the Council heard only support for the change and no members of the public opposed the law.

Historically the City of Wilsonville relied on Clackamas County to enforce dog control laws in public spaces; due to budget cuts, however, County enforcement has halted.

The new ordinance is enforced by the Wilsonville Police Department, which initially is focusing on voluntary compliance by educating dog owners about the expanded law. Violations of the law, however, are subject to a maximum penalty of up to a \$250 fine.

While most dog owners already clean up after their dogs, the new law includes a provision that now requires dog owners to properly collect and dispose of their dog's waste or be subject a fine. With compliance the new leash laws will help improve public safety, reduce conflicts between dogs and help protect our natural areas and wildlife habitat.



WERK Day volunteers shoveling gravel to be laid on the path to Memorial parks Off Leash Dog Area.

VOLUNTEER SPOTLIGHT: MARY FIERROS BOWER

Mary Fierros Bower not only volunteers as Chair of Wilsonville's Development Review Board (DRB) Panel A, but she is also a professional designer with extensive experience in Oregon and California. In 2005 Mary joined LRS Architects, an award-winning architecture, interior design and planning firm based in Portland.



As an associate and project manager with LRS, her architectural education and professional experience make her well qualified to lead one of the City's two panels of the DRB. At the monthly DRB evening meetings, Mary leads the five-member board in reviewing and rendering decisions on a wide variety of development applications such as land divisions, site reviews, design review, street naming, zoning variances, conditional use permits, and amendments to the City's Comprehensive Plan or zoning.

"Mary's passion for the community —when combined with her knowledge of quality site design, sustainability and architecture —make her a rare and valuable asset on the Development Review Board. The community is very fortunate to have Mary at the helm of many local development decisions," said Chris Neamtzu, City Planning Director. Mary has an impressive professional background designing and managing a variety of projects including high tech, mixed-use, commercial office, retail, tenant improvements, fire stations and custom residential projects. Some of the projects that she is most proud of include a long-term relationship with a confidential high-tech client, and serving as project manager for the new Lents Town Center mixed-use project and for her work on the Clackamas County Fairgrounds master plan. Additionally, while in California, she was lead designer for the Santa Cruz City Hall renovation and for Boston Properties in the San Francisco Bay area and served as design review consultant for "The Cloisters," a prominent housing development in Morro Bay, CA.

Mary is committed to designing and supporting developments that have a reduced impact on our environment. As a LEED (Leadership in Energy and Environmental Design) accredited professional, Mary is very familiar with best practices and latest developments in sustainable design and green building. "Sustainability to the built environment is important because I have the opportunity to create environmentally friendly, timeless and beautiful architecture for future generations to enjoy." Mary received her Bachelor of Architecture from California Polytechnic State University, College of Architecture. She has been a volunteer on Wilsonville's DRB since May 2011, was elected to Chair in 2013, and is serving as Chair once again for 2014. Mary has lived in Charbonneau since 2005 with her husband Allen Bower and seven-year-old son AJ. When she is not designing or reviewing new developments she enjoys spending time with her family, jogging and playing Wii with her son.



WERK Day volunteers from Wilsonville High School hauling away ivy.



The Boones Ferry Messenger

Monthly newsletter of the City of Wilsonville

October 2013

Tualatin and Wilsonville City Councils to Hold Joint Meeting

City Councils of the cities of Tualatin and Wilsonville are scheduled to hold a special joint work session on Tuesday, October 29, 6 p.m., at Wilsonville City Hall, 29799 SW Town Center Loop East. The two elected bodies plan to discuss goals, visions and expected outcomes of the Basalt Creek/West Railroad concept planning process that is being funded primarily by a \$350,000 Metro community planning and development grant.

The 775-acre Basalt Creek/West Railroad area is located between Tualatin and Wilsonville in unincorporated Washington County. Jurisdiction of the area will ultimately be divided between the two cities, both of which envision it including green spaces, a small amount of retail, employment and residential uses.

Both cities see the area contributing, along with Wilsonville's Coffee Creek and Tualatin's Southwest Concept Plan areas, to the major "southwest employment area" that is expected to grow substantially in the future. Both councils recently adopted a "Transportation Refinement Plan" for the area. For more information, contact Katie Mangle, Long-Range Planning Manager, at 503-570-1581; mangle@ci.wilsonville.or.us.

