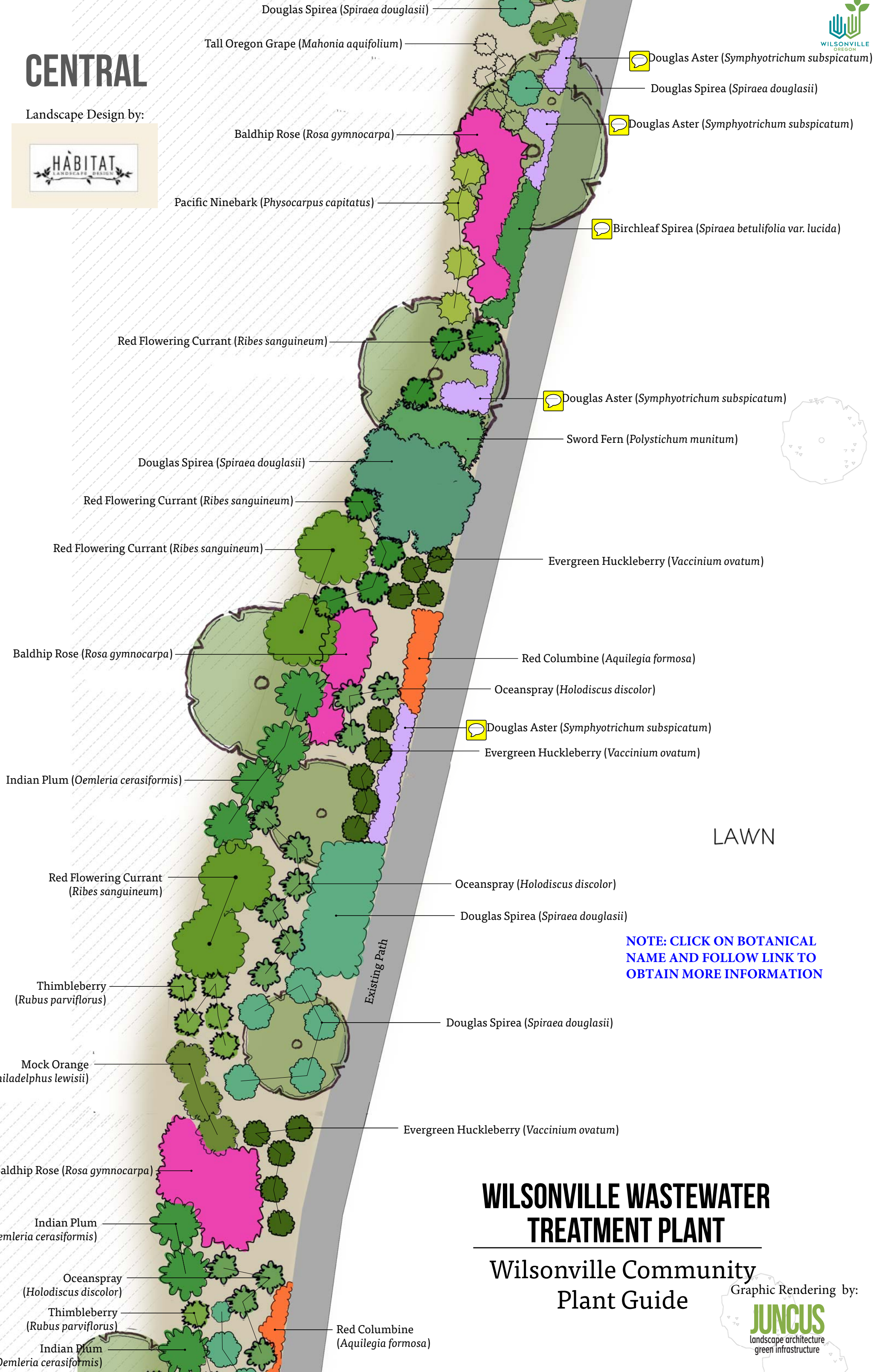


CENTRAL

Landscape Design by:



Douglas Spirea (*Spiraea douglasii*)

Tall Oregon Grape (*Mahonia aquifolium*)

Douglas Aster (*Symphyotrichum subspicatum*)

Douglas Spirea (*Spiraea douglasii*)

Douglas Aster (*Symphyotrichum subspicatum*)

Baldhip Rose (*Rosa gymnocarpa*)

Birchleaf Spirea (*Spiraea betulifolia* var. *lucida*)

Pacific Ninebark (*Physocarpus capitatus*)

Red Flowering Currant (*Ribes sanguineum*)

Douglas Aster (*Symphyotrichum subspicatum*)

Sword Fern (*Polystichum munitum*)

Douglas Spirea (*Spiraea douglasii*)

Red Flowering Currant (*Ribes sanguineum*)

Red Flowering Currant (*Ribes sanguineum*)

Evergreen Huckleberry (*Vaccinium ovatum*)

Baldhip Rose (*Rosa gymnocarpa*)

Red Columbine (*Aquilegia formosa*)

Oceanspray (*Holodiscus discolor*)

Douglas Aster (*Symphyotrichum subspicatum*)

Evergreen Huckleberry (*Vaccinium ovatum*)

Indian Plum (*Oemleria cerasiformis*)

LAWN

Red Flowering Currant (*Ribes sanguineum*)

Oceanspray (*Holodiscus discolor*)

Douglas Spirea (*Spiraea douglasii*)

NOTE: CLICK ON BOTANICAL NAME AND FOLLOW LINK TO OBTAIN MORE INFORMATION

Thimbleberry (*Rubus parviflorus*)

Douglas Spirea (*Spiraea douglasii*)

Mock Orange (*Philadelphus lewisii*)

Evergreen Huckleberry (*Vaccinium ovatum*)

Baldhip Rose (*Rosa gymnocarpa*)

WILSONVILLE WASTEWATER TREATMENT PLANT

Wilsonville Community Plant Guide

Graphic Rendering by:



Indian Plum (*Oemleria cerasiformis*)

Oceanspray (*Holodiscus discolor*)

Thimbleberry (*Rubus parviflorus*)

Indian Plum (*Oemleria cerasiformis*)

Red Columbine (*Aquilegia formosa*)