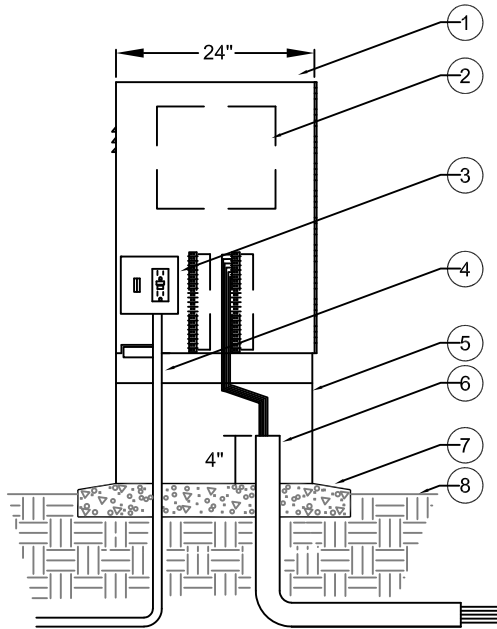
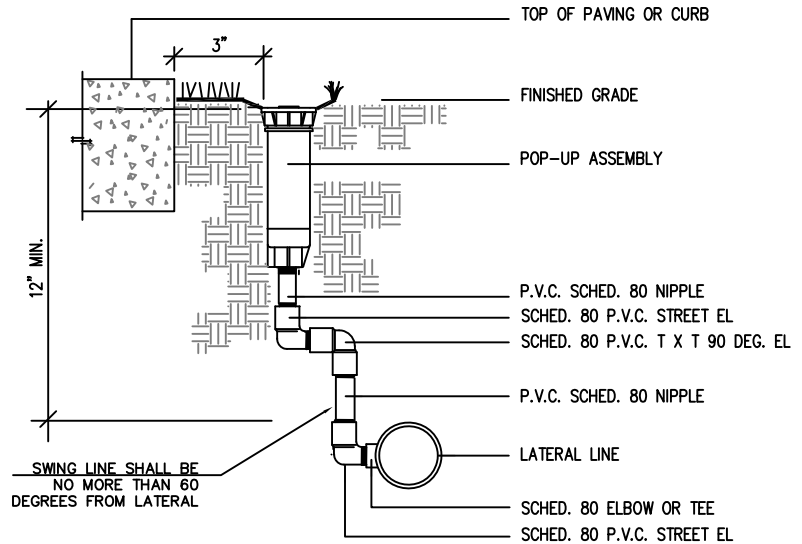


This Detail Drawing may not be altered or changed in any manner except by the City Engineer. It is the responsibility of the user to acquire the strong current version.

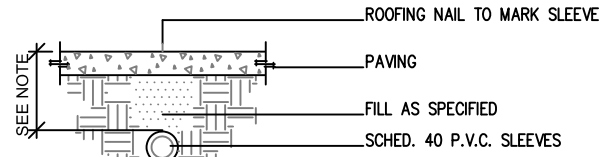


STRONGBOX FRONT ENTRY WITH CONCRETE PAD

1. STRONGBOX ENCLOSURE FRONT ENTRY PN#SB-24SS.
2. AUTOMATIC CONTROLLER. CONTROLLER SUBASSEMBLY (CSA) INCLUDES GFI, SWITCH, TERMINAL STRIPS WITH PLACARDS.
4. 120-VOLT SERVICE IN CONDUIT.
5. PEDESTAL RISER (OPTIONAL).
6. PVC CONDUIT OUT TO CONTROL VALVES.
7. POURED CONCRETE BASE, 6" MIN. THICKNESS EXTENDING 4" BEYOND OUTSIDE DIMENSIONS OF ENCLOSURE WITH 1/2% SLOPE FOR DRAINAGE.
8. FINISH GRADE.

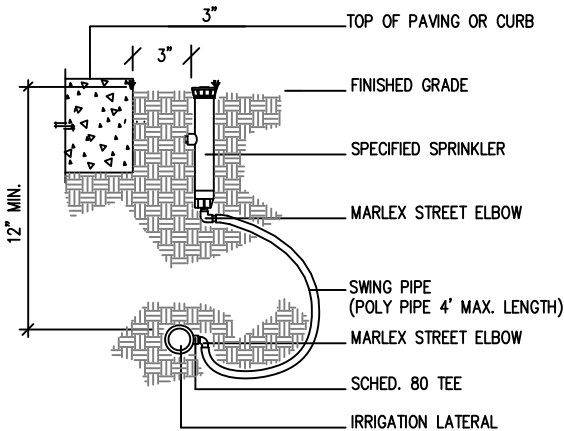


SECTION- LARGE POP-UP ASSEMBLY



AT PAVING

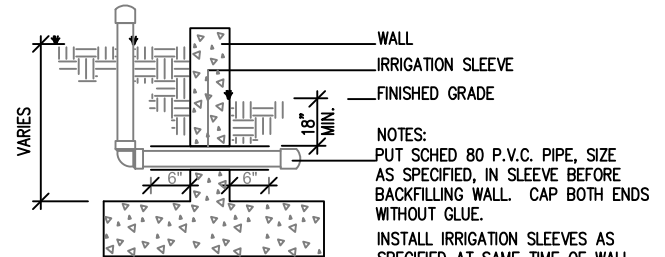
- NOTES:
 EXTEND IRRIGATION SLEEVE 12" BEYOND EACH SIDE OF PAVING.
 DEPTH OF MAINLINE = 24".
 DEPTH OF LATERAL = 18" MIN.



SECTION- SMALL POP-UP ASSEMBLY

NOTES:

1. A MANUFACTURER'S REPRESENTATIVE FOR THE SPECIFIED CONTROLLER SHALL TRAIN AND EDUCATE MAINTENANCE STAFF ON USE OF THE CONTROLLER, AS REQUIRED.
2. IT IS THE CONTRACTORS RESPONSIBILITY TO PROVIDE A FULLY FUNCTIONAL AUTOMATIC IRRIGATION SYSTEM PROVIDING COVERAGE TO ALL PLANTING BEDS, STRIPS, AND PLANTERS AS DESCRIBED ON THE DRAWINGS AND IN THE SPECIFICATIONS.
3. ALL IRRIGATION PIPING SHALL BE A MINIMUM SCHEDULE 40 PVC.
4. CONTRACTOR TO VERIFY AVAILABLE P.S.I. AT THE POINT OF CONNECTION AND POWER SUPPLY FOR CONTROLLER BEFORE COMMENCEMENT OF INSTALLATION. EXACT LOCATION OF CONTROLLER TO BE COORDINATED WITH CITY MAINTENANCE STAFF, LANDSCAPE ARCHITECT, AND NECESSARY SUB-CONSULTANTS.
5. MAINLINE SLEEVES SHALL BE INSTALLED 24 INCHES (MIN) BELOW FINISHED PAVED SURFACE. ADJUST HEIGHT AS NEEDED TO ROUTE AROUND UTILITIES. EXTEND SLEEVES AT LEAST 12 INCHES INTO PLANTING AREAS.
6. LATERAL SLEEVES SHALL BE INSTALLED 18" (MIN) BELOW FINISHED PAVED SURFACE. ADJUST HEIGHT AS NEEDED TO ROUTE AROUND UTILITIES. EXTEND SLEEVES AT LEAST 12 INCHES INTO PLANTING AREA.
7. INSTALL TRACING WIRE OVER ALL MAINLINE PIPE AND OVER CONTROL WIRE WHICH IS NOT INSTALLED IN TRENCH WITH PIPE. ROUTE FROM CONTROLLER TO ENDS OF PIPE. PROVIDE 12 INCHES OF COILED TRACING WIRE IN CONTROLLER. MAKE ALL CONNECTIONS WATER TIGHT.
8. CONTRACTOR TO SET FLAGS TO IDENTIFY PROPOSED VALVE AND VALVE BOX, QUICK COUPLER, ISOLATION VALVE, SPRINKLER LOCATIONS AND GENERAL LAYOUT OF MAIN LINES. OBTAIN LANDSCAPE ARCHITECTS APPROVAL BEFORE EXCAVATION.



AT WALLS OR CURBS

- NOTE:
 SLEEVES ARE TO BE TWICE THE DIAMETER OF THE LINE OR LINES PASSING THROUGH THEM.

SECTION- IRRIGATION SLEEVING

Public Right-Of-Way Irrigation Details Part 2

DRAWING NUMBER: WT-3125

DRAWN BY: SR

SCALE: N.T.S.

FILE NAME: WT-3125.DWG

APPROVED BY: NK

DATE: 2/20/18

CITY OF WILSONVILLE



PUBLIC WORKS STANDARDS