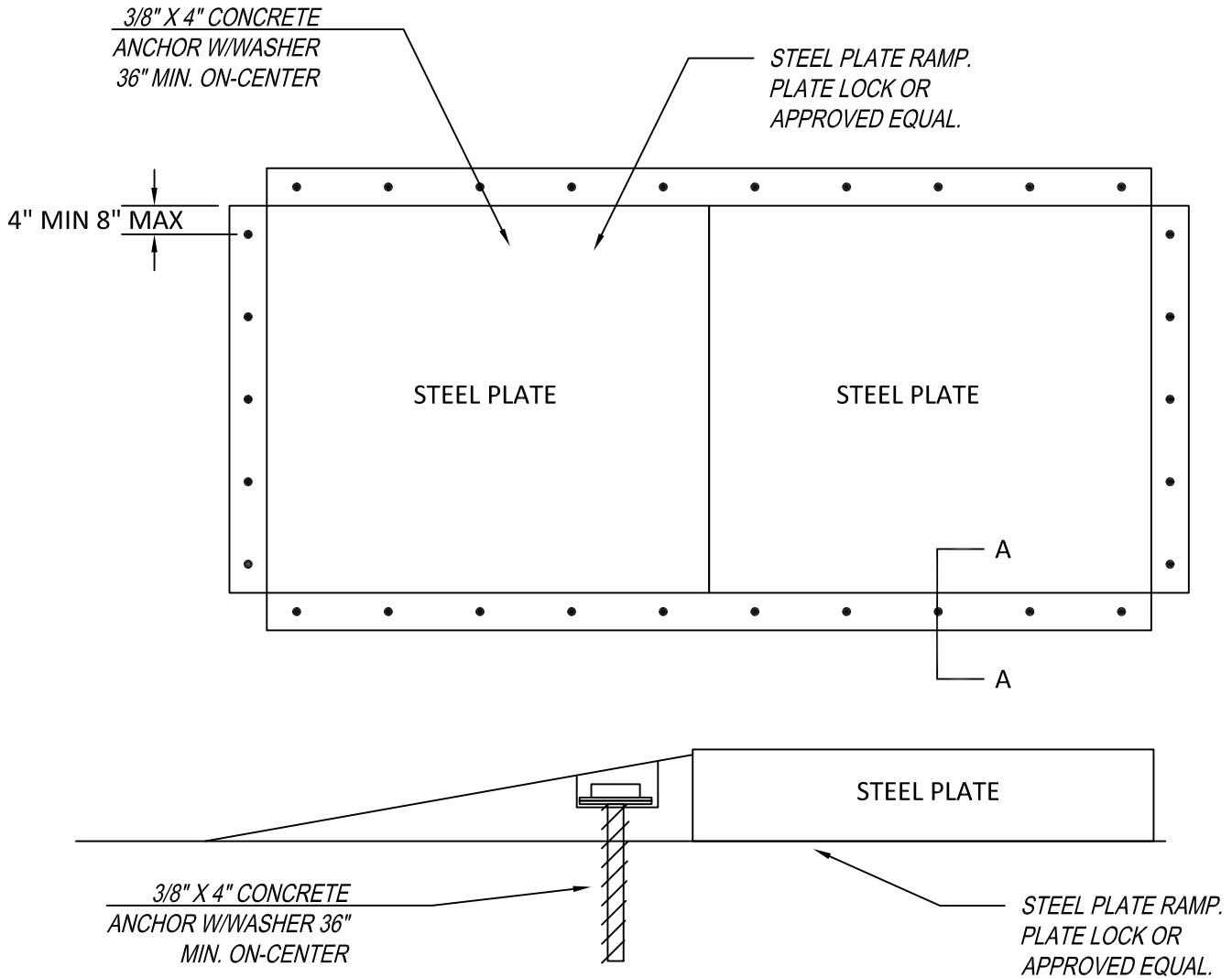


This Detail Drawing may not be altered or changed in any manner except by the City Engineer. It is the responsibility of the user to acquire the most current version.



SECTION A-A

NOTES:

1. FOR EXCAVATIONS OPEN LESS THAN 24 HOURS, PLACE STEEL PLATES OVER EXCAVATION USING COLD MIX ASPHALT TO LEVEL PAVEMENT SURFACE AND BUILD A MINIMUM 12H:1V TRANSITION RAMP AROUND ALL PLATE EDGES. PIN STEEL PLATES TO ROADWAY.
2. FOR EXCAVATIONS OPEN LONGER THAN 24 HOURS, PLACE TRANSITION RAMPS AROUND STEEL PLATES AS SHOWN ABOVE. DO NOT EXTEND TRANSITION RAMPS BEYOND THE END OF THE STEEL PLATE. TRANSITION RAMPS SHALL BE "PLATE LOCK" OR APPROVED EQUAL.
3. PLACE SHIMS BETWEEN ROADWAY AND THE STEEL PLATE/TRANSITION RAMPS AT ALL LOCATIONS WHERE THERE IS NO DIRECT CONTACT WITH THE ROAD SURFACE AT THE ANCHOR LOCATIONS. USE SHIMS MANUFACTURED TO FUNCTION AS A SYSTEM WITH THE TRANSITION RAMPS, "PLATE SHIMS" OR APPROVED EQUAL.
4. UNSCREW CONCRETE ANCHORS TO REMOVE TRANSITION RAMP. SCREWS SHALL NOT BE CUT OFF, PULLED OUT, OR LEFT IN PLACE.
5. UPON REMOVAL OF THE STEEL PLATES AND TRANSITION RAMPS, FILL HOLES WITH AN APPROVED EMULSIFIED ASPHALT SLURRY.
6. STEEL PLATES SHALL NOT BE LEFT IN THE ROADWAY FOR LONGER THAN 5 WORKING DAYS UNLESS APPROVED IN WRITING BY THE CITY'S AUTHORIZED REPRESENTATIVE.

Steel Plate Installation

DRAWING NUMBER: S-2146

DRAWN BY: SR

SCALE: N.T.S.

FILE NAME: S-2146.DWG

APPROVED BY: NK

DATE: 6/4/14

**CITY OF
WILSONVILLE**



PUBLIC WORKS STANDARDS