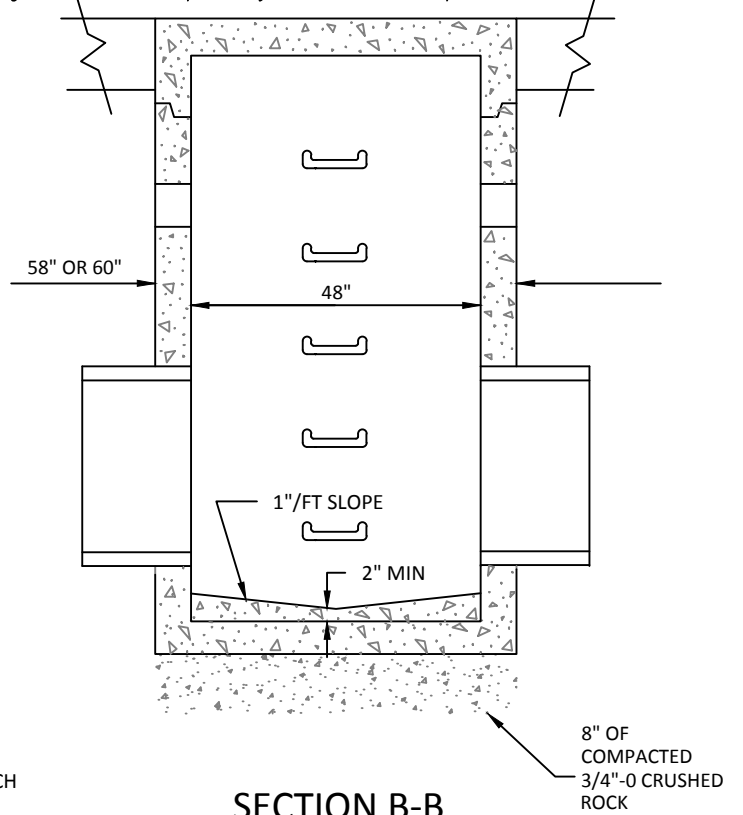
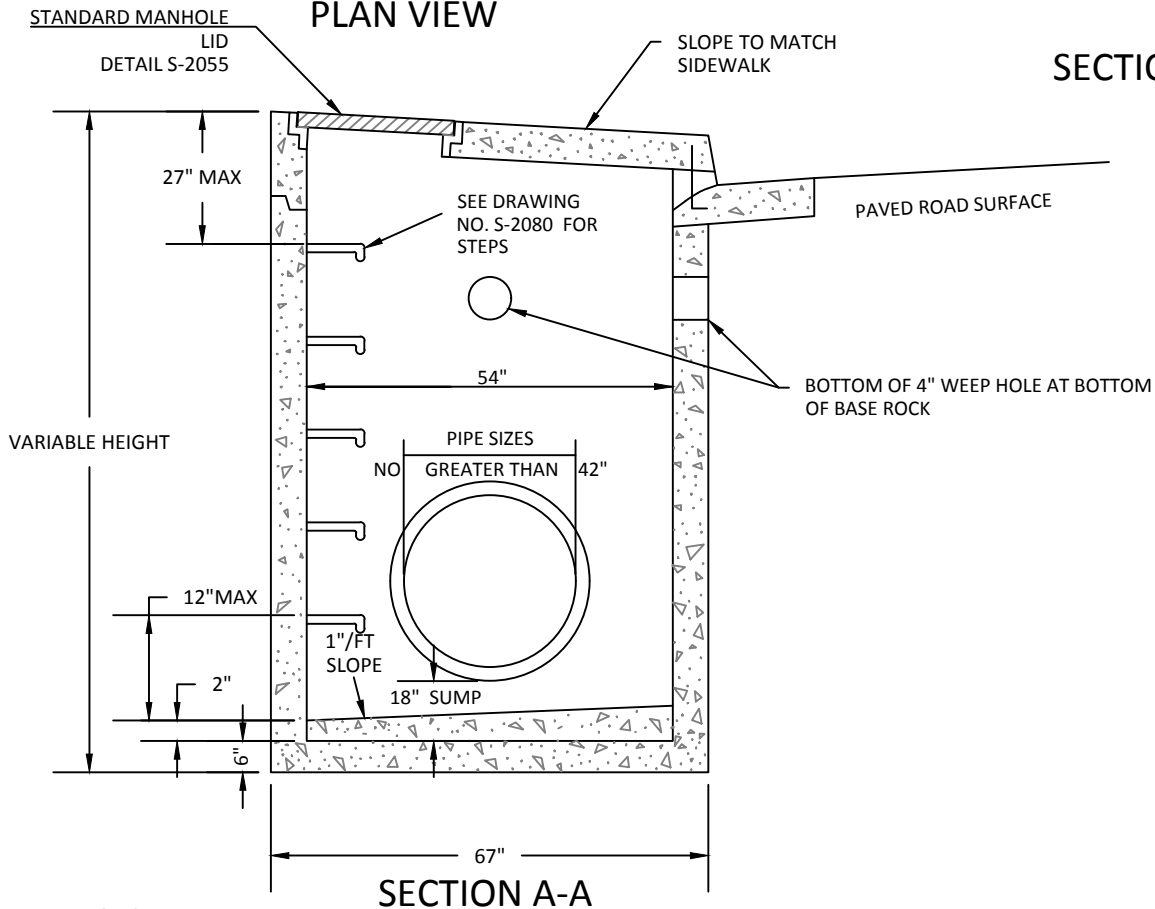


PLAN VIEW



SECTION B-B



SECTION A-A

NOTES:

1. CURB INLET (CG-48) TO BE USED FOR FLOW THROUGH CATCH BASIN APPLICATIONS ONLY.
2. ALL FABRICATED METAL PARTS SHALL BE HOT-DIPPED GALVANIZED AFTER FABRICATION.
3. CONCRETE SHALL ATTAIN A MIN. COMPRESSIVE STRENGTH OF 3000 PSI. IN 28 DAYS.
4. PRECAST CURB INLET SHALL BE OLD CASTLE 48" CURB INLET TOP CI-48MH-23FC OR APPROVED EQUAL.
5. NON-SUMP CATCH BASIN SHALL BE CHANNLED.
6. INSTALL STEPS WHEN DISTANCE FROM GUTTERLINE TO FLOW LINE OF PIPE IS GREATER THAN 5 FEET.
7. CONSTRUCT CURB AND GUTTER TRANSITIONS AT CURB INLET PER DETAIL S-2085, ADJUSTING FOR CURB INLET WIDTH.
8. POUR BOTTOM TO SLOPE TO STEPS WITH A SMOOTH, TROWEL FINISH.

Curb Inlet (CG-48)

CITY OF
WILSONVILLE



DRAWING NUMBER: S-2090

DRAWN BY: SR

SCALE: N.T.S.

FILE NAME: S-2090.DWG

APPROVED BY: NK

DATE: 1/20/15

PUBLIC WORKS STANDARDS