

From The Director's Office:

Seismic retrofit improvements to the Willamette River Water Treatment Plant raw water pump (RWP) station are complete.

The RWP building houses the caisson and pumps that delivers raw water to both the City's and the Willamette Water Supply Program's water treatment plants. The reinforcement work will protect this facility during a major earthquake and help ensure the continuous supply of potable water after a seismic event. This work compliments the previously completed riverbank stabilization improvements.

RWP building retrofit work included the careful removal of exterior brick sections and installation of temporary shoring to support the structure's roof and walls which were then disconnected from the roof deck. New steel-reinforced, high-strength concrete walls were constructed around the exterior of the existing concrete masonry walls. Underground grade beams and roof-load transfer beams were installed to distribute forces during an earthquake and to tie the existing roof into the new concrete walls.

This challenging work was completed while the pump station remained in full operation. The work was successfully completed due to careful planning, close coordination, and exacting execution.



Best Regards,

Delora Kerber, Public Works Director

Facilities

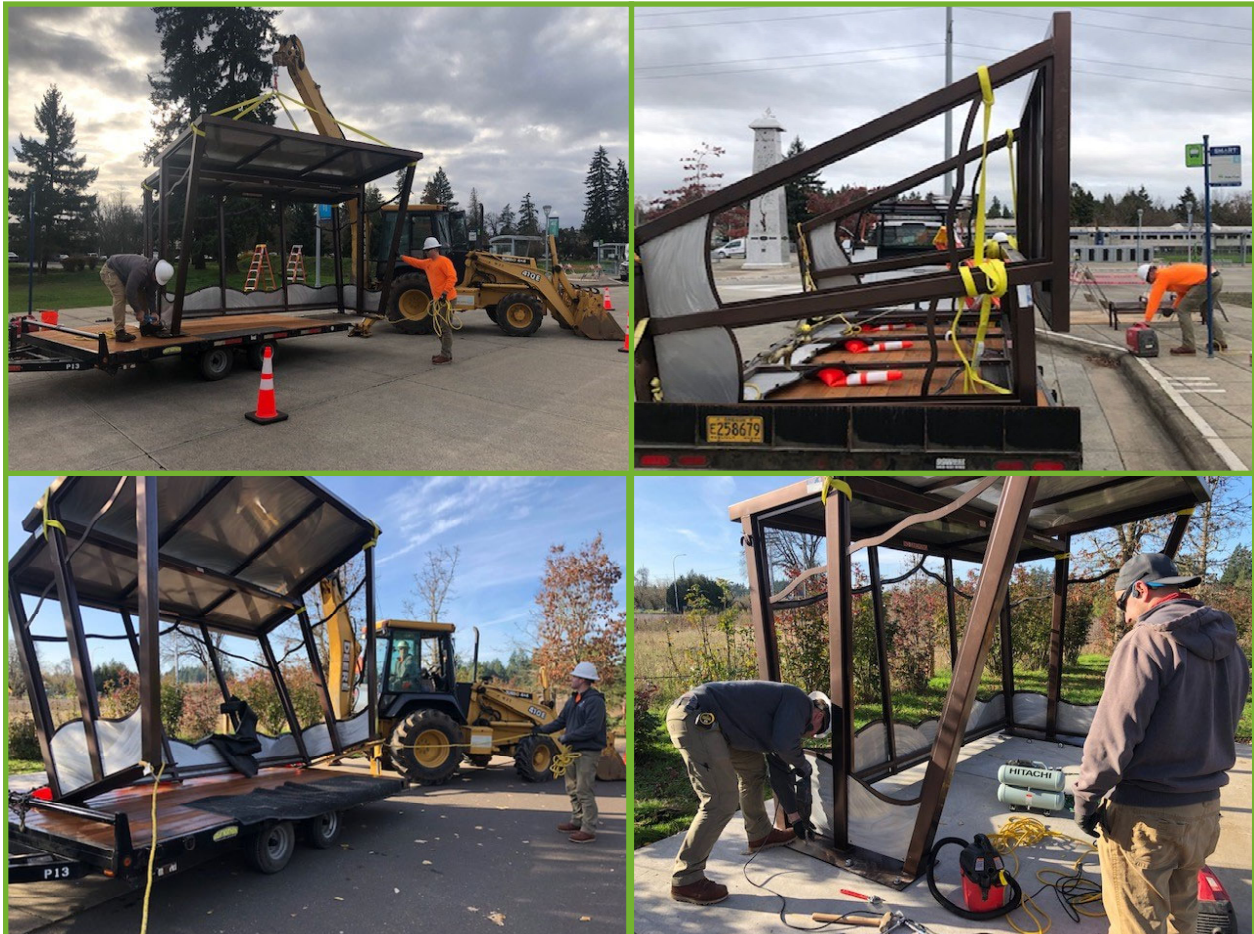
Relocating Bus Shelter

The crew assisted the Transit department to relocate one of the artistic bus shelters at the WES bus station to a new location at Graham Oaks Nature Park. After removing the decorative glass inserts, staff utilized a backhoe loader to place the shelter on a flatbed trailer. The shelter was delivered to the transit maintenance yard where the structure was pressure washed and the bottom of the mounting plates were given new coat of primer.

Next the shelter was moved to the Graham Oaks Nature park where it was carefully picked from the trailer and placed in its new resting place. Sixteen holes were drilled in the concrete to receive the new anchor bolts and the shelter was bolted securely in place. The crew will now work on reinstalling the decorative glass into the shelter frame.



Trevor removing glass panels



Loading the bus shelter structure and relocating it to Graham Oaks Nature Park

Facilities cont.

Just a Bit of Housekeeping

Taking advantage of the dry weather break, Robert Todd, Facilities Maintenance Specialist, completed much-needed striping in the Art Tech parking lot. To ensure that the paint adhered to the pavement, the lines were heated with a propane torch to dry up any dampness and remove moss build up. These are temporary markings as the parking lot is due to be slurry sealed and restriped next spring.



Prepping for striping



Applying paint

The maintenance team stayed vigilant on leaf removal duty at City facilities, keeping the landscape beds tidy and ensuring that sidewalks and curbs were clear.



Raking leaving into the leaf vacuum

Facilities cont.

Holiday Decorations

Staff have been hard at work this month to add some cheer to our buildings. The entire team worked together to pull the decorations out of storage and have them in place prior to the Thanksgiving holiday weekend.



Facilities cont.

It's feeling festive at the City—Happy Holidays from Public Works!



Roads

Holiday Tree Lights

The Roads department spent a full week trimming trees and installing lights along Wilsonville Road. After approximately 100 work hours and 3,000 feet of lights, the section between Boones Ferry Road and Town Center Loop East is more merry and bright. A special thanks to Gio Bazan, one of our Roads Maintenance Specialists, who took the lead on holiday decorating and to the City of Oregon City for loaning our staff a bucket truck to complete the project.



Gio and Ricardo shaping the cypress



Holiday tree "glow up"

Roads cont.

Getting a Lift for Work

The crew borrowed a 150 foot lift to complete holiday light installation in the median on Wilsonville Road, near Rebekah Street. Parks & Recreation rented the equipment to complete their transformation of Town Center Park and Public Works took the opportunity to use the lift to safely go for the extra reach.



Escorting the lift down Town Center Loop East



Roman had the tricky task of driving the lift

Roads cont.

Holiday Light Installation



Adding lights to the trees in the median



Working safely in the roadway

Stormwater

Leaves Cause Water Backup

After the stormy weather early in the month, Village Crest Lane and Charbonneau Golf Club experienced flooding issues. Leaves blown into the stormwater catch basin contributed to the accumulation of standing water, slowing the rainwater draining from the roadway. The crew used pumps to divert water from the obstructed area and then used the high pressure water jet on the vacor truck to break up the clog. Properly disposing of fall leaves into yard waste bins for collection greatly reduces obstructions in the stormwater system and keeps the water flowing.



Standing water after heavy rain



Jetting the line to remove debris

Utilities—Water

Annual Fire Hydrant Maintenance

The Water crew focused on completing the annual hydrant inspections for 2021. Every year, a quarter of the hydrants within the City undergo a thorough inspection, testing their function and structure. Each one is fully turned on with all of the ports remaining closed to pressurize the hydrant. The operator visually inspects the hydrant for any leaks before turning it off and listening as the water to drain out of the bleeder valves. Once it is depressurized, the main port of the hydrant is opened to ensure all of the water has drained out. Hydrants that leak or do not turn off or on smoothly are dismantled and repaired.

The operator inspects the structure, checking the caps, ensuring the identification number is present, inspecting the paint, and addressing obstructions around the hydrant such as vegetation. The final step of the process is placing a reflective “blue dot” in the road to allow fire crews to quickly identify the location of the hydrant in the event of an emergency.



Paul completing an inspection

Utilities—Wastewater

Manhole Repair in Villebois

The Wastewater crew continued cleaning efforts in the Coffee Creek basin. Staff is well on the way to completing their annual goal of cleaning 20% of the collection system. The crew has also been performing more manhole repairs in order to reduce water infiltration from entering the collection system. Conducting repairs and maintenance requires planning and teamwork to safely complete the work.



Paul flagging during a manhole repair

In addition to traffic control in the street, our Utilities Maintenance Specialists, Randy Burnham and David Perfecto, teamed up to work on the interior of the manhole vault. David, wearing coveralls and fall protection equipment, worked inside the manhole. Randy assisted by prepping the concrete for patching and acting as a spotter. Confined space entries like this are a necessary part of sewer system maintenance. So much of the vital work the Wastewater crew performs is underground and out of sight.



David preparing for entry



Randy mixing patching material

Utilities—Wastewater cont.

The Peril of “flushable” Wipes

Even with a proactive sewer cleaning and inspection program, blockages can still occur. This month, a plumber performing a lateral inspection discovered an issue and the homeowner called Public Works to report the drainage problem. The wastewater crew was onsite within 15 minutes and identified the source of the obstruction— a dam of wipes and paper.



The source of the issue...



Jetting through the obstruction

The crew broke up the material with a spray gun, jetted the sewer main and restored the sewer back to normal function. This blockage did not create a sanitary sewer overflow, but significantly restricted the flow of the run. The next day, the crew returned with the CCTV van and performed a video inspection of the sewer main to ensure that the pipes were structurally sound and functioning properly.

This serves as a reminder that disposable does not mean ‘flushable’! Flushing paper products and other garbage down the toilet wastes water and contributes to sewer backups.